

Dräger

Flow reduction

- Anti-air shower
 - Manual disconnection
-

Dräger

VC-SIMV 11:12 Tube

60%

Procedures

Maneuvers Low-flow PV loop Diagnostics Patient transport

Manual insp./ inspiration hold Manual insp./ inspiration hold Touch and hold

Expiration hold Expiration hold Touch and hold

O2/suctioning O2/suctioning

Manual disconnection Manual disconnection

Nebulization min 5 min 10 min 15 min 30 min ∞ Cancel

FiO2 Vol% 21

PIP mbar 20³⁰

PEEP mbar 5.0

MVe L/min 4.11^{9.6}_{2.6}

RR /min 14

Alarms Views Trends/data Sensors Procedures System setup

Manual insp./ inspiration hold

Manual disconnection

Manual disconnection Evita V800 / Evita V600

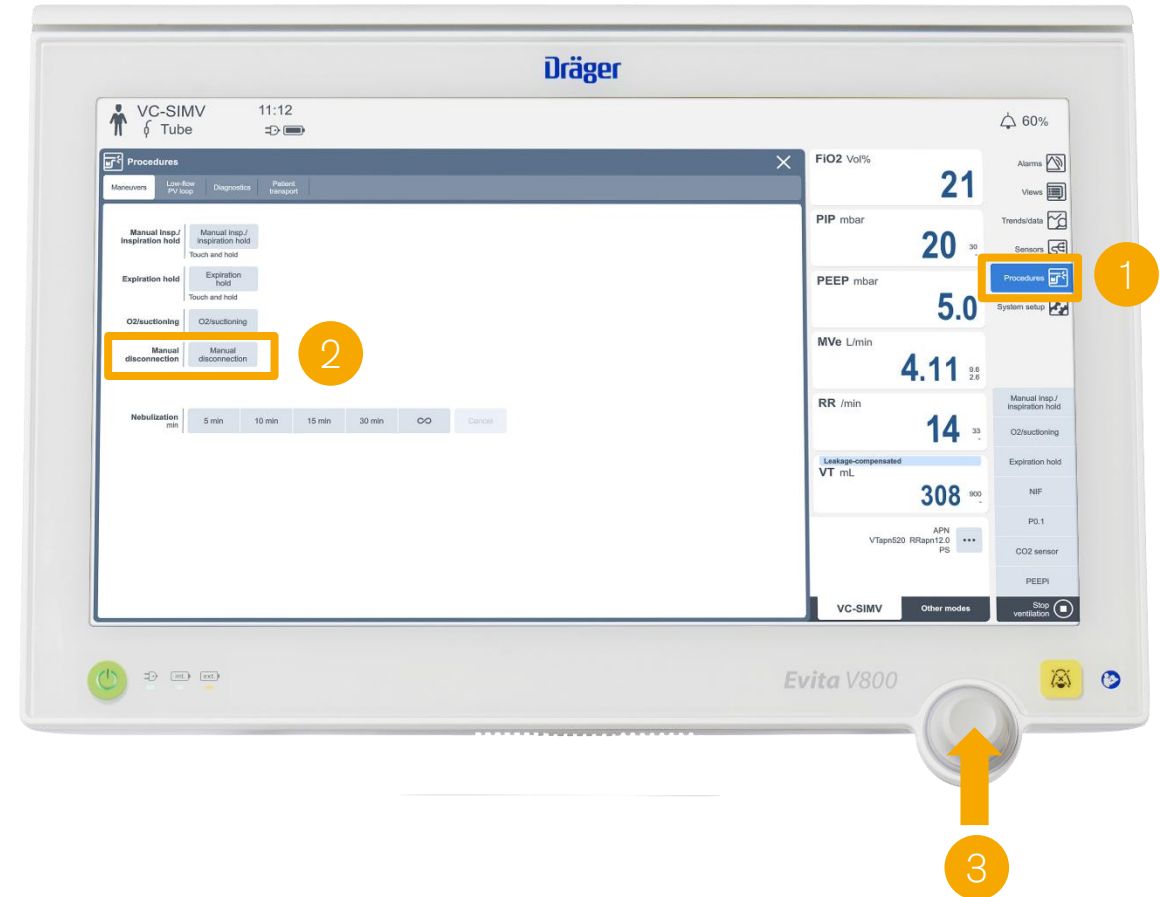
Evita V800, Evita V600

When the **Manual disconnection** function is activated, the device **reduces flow delivery** in case of disconnection.

The patient can be disconnected within the next 10 seconds.

When the patient is reconnected, the device resumes ventilation in the set ventilation mode.

1. To activate manual disconnection touch the **Procedures** button
2. Touch the **Manual disconnection** button
3. Confirm by pressing the **rotary knob**



Manual disconnection Evita Infinity V500

Evita Infinity V500

When the **Manual disconnection** function is activated, Evita V500 **reduces flow delivery in case of disconnection.**

The patient can be disconnected within the next 10 seconds.

When the patient is reconnected, the device resumes ventilation in the set ventilation mode.

1. Touch the **Special procedures...** button in the main menu bar.
The device opens the Special procedures dialog window
2. Touch the **Functions** button if the page is not already preset
3. Touch the **Manual discon.** button (B) and
4. Confirm by pressing the **rotary knob**

The **Manual disconnection** maneuver can be configured as a **Manual discon.** button in the main menu bar to enable direct access.



Manual disconnection Evita V300

Evita V300

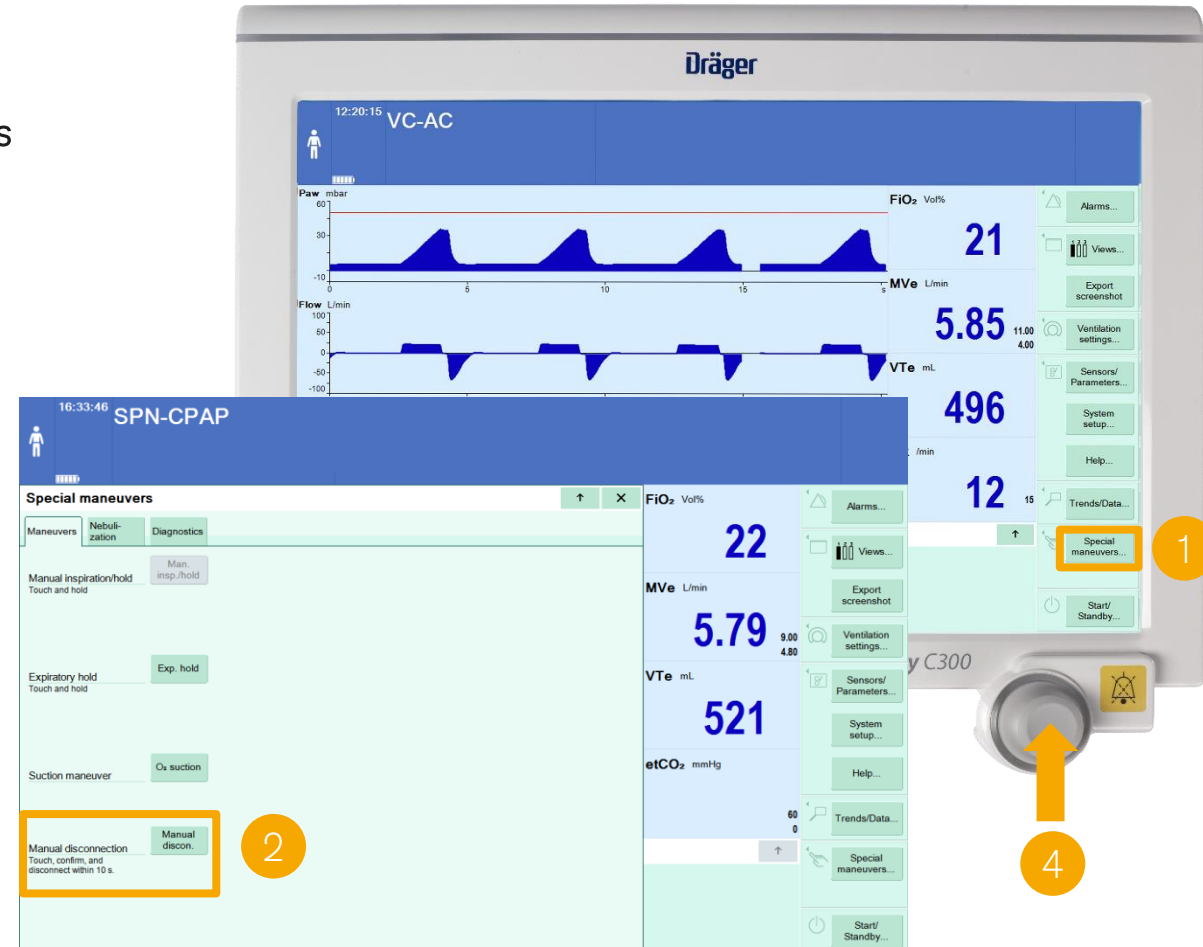
When the **Manual disconnection** function is activated, Evita V300 **reduces flow delivery in case of disconnection.**

The patient can be disconnected within the next 10 seconds.

When the patient is reconnected, the device resumes ventilation in the set ventilation mode.

1. To activate touch the **Special maneuvers** button in the main menu bar. Evita V300 opens the Special maneuvers dialog window
2. To activating manual disconnection touch the **Manual discon.** button
3. Confirm by pressing the **rotary knob**

The **Manual disconnection** maneuver can be configured as a **Manual discon.** button in the main menu bar to enable direct access.



Dräger

Standby 14:11
Tube

Standby
Patient not ventilated

System setup

Screen Alarms Ventilation Start settings Options Battery System

Leakage compensation On Off

Expiratory compensation (ATC) On Off

Inspiratory compensation (ATC) Spont. and mand. Spont. only

Autom. return from apnea ventilation On Off

Apnea ventilation alarm On Off

Pmax/Paw high autoset On Off

"Insp term" during pressure support On Off

Anti-air shower On Off
Reduces the flow during disconnection.

Check the alarm limits

MVe	L/min	5.0	9.4
Paw	mbar	30	
RR	/min	47	
VT	mL	260	1040
etCO2	mmHg		

Anti-Air Shower

Anti-air shower Evita V800 / Evita V600

Evita V800, Evita V600

Flow reduction – Anti-air shower

When the Anti-air shower function is activated and a disconnection is detected during ventilation, the flow is reduced until reconnection is detected.

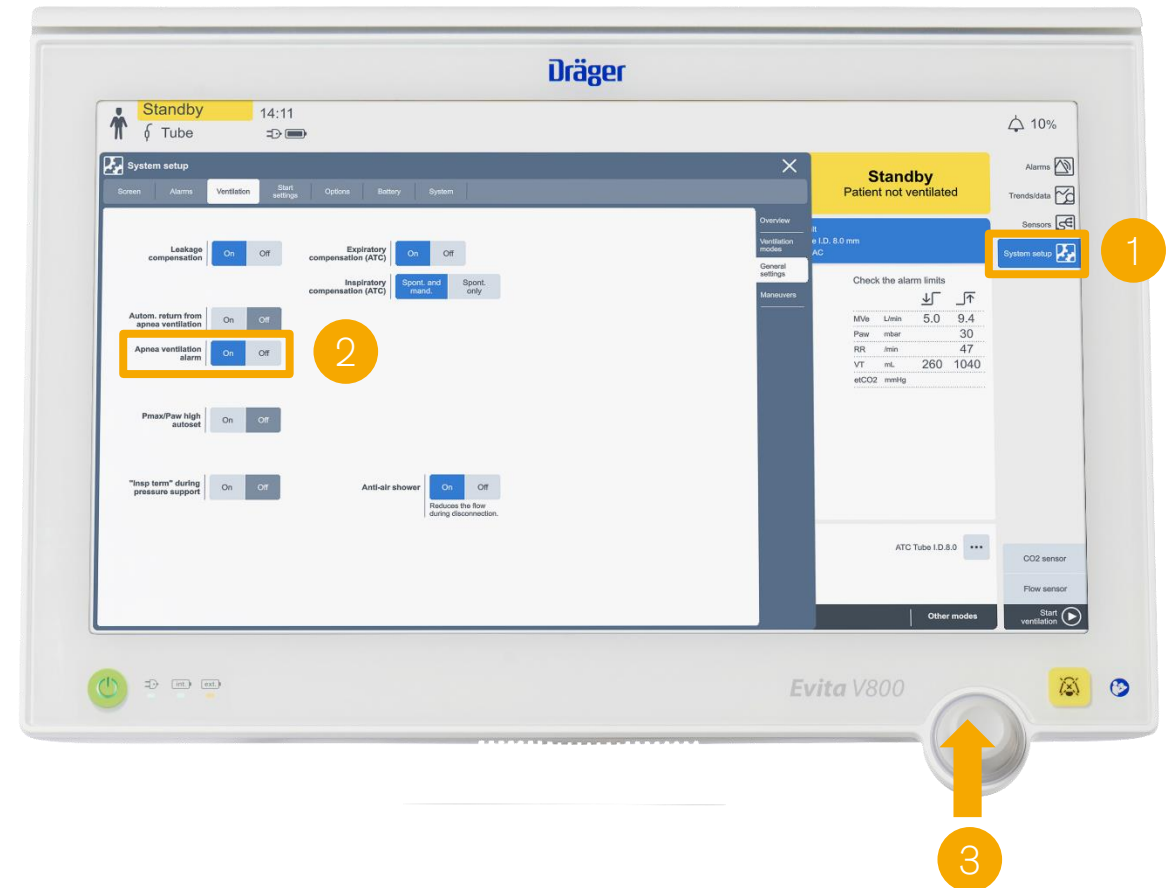
Simultaneously, the “Disconnection detected” alarm is displayed.

For non-invasive ventilation, the time before the alarm is triggered can be delayed with the setting Tdiscon. The minute volume may be reduced due to the already reduced flow.

The Anti-air shower function can be configured on the dialog page
System setup > Ventilation > General settings

The password must be entered.

The settings can be activated or deactivated. Ventilation starts with the selected settings.



Anti Air Shower Evita Infinity V500 / Evita V300

Flow reduction Anti Air Shower

If a disconnection is detected, flow delivery is reduced until after reconnection.

1. To activate manual disconnection touch System setup ...
2. Touch the Ventilation page button (A)
3. Touch the General settings tab (B)
4. Switch Anti Air Shower (H) on or off
5. Confirm by pressing the rotary knob

Evita V500 starts with the selected settings.



Many thanks

Dräger. Technology for Life®