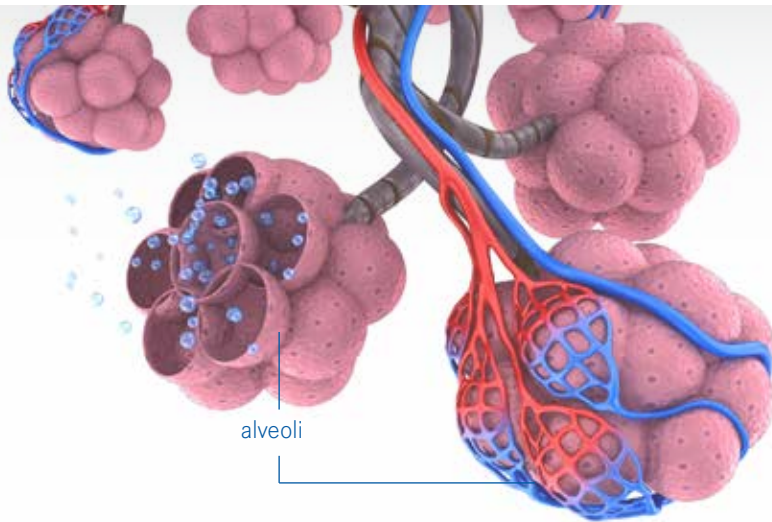


# 9 out of 10 patients suffer from atelectasis in the operating room.

Source: Byung-Koo Um, Jeong-Kui Ku & Yong-Soo Kim (2018). T and treatment of obstructive atelectasis after general anesthesia in a patient with abscess in the maxillofacial area: A case report. J Dent Anesth Pain Med 2018;18(4):271-275





## Atelectasis

- 1 It is a condition where the alveoli in the lungs are deflated to little or no volume. This is a common condition occurring during general anesthesia.
- 2 It can lead to intraoperative and postoperative pulmonary complications with impact on morbidity and mortality.

## Lung recruitment manoeuvres

### Indications

- Obesity
- Endotracheal suction & tube disconnection
- Ventilation with higher fraction of inspired oxygen
- Atelectasis resulting in hypoxaemia and impairment of ventilation

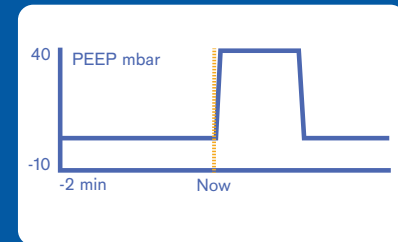
### Contraindications

- Lung emphysema
- Haemodynamic instability
- Right heart problems
- Increased brain pressure

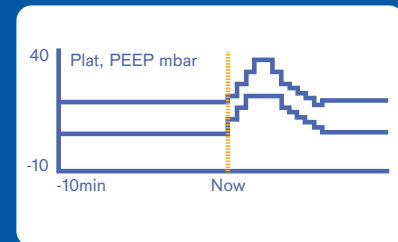
# Effects of recruitment manoeuvres

- 1 Improvement of ventilation and oxygenation
- 2 Increase of function residual capacity
- 3 Increase in lung compliance
- 4 Reduction of work in breathing
- 5 Reduction of right-left shunt

## One-step recruitment



## Multi-step recruitment





Contact us today and  
find out more about Lung  
Recruitment manoeuvres!

Visit us at [www.draeger.com/atlan](http://www.draeger.com/atlan)



Download our whitepaper and infographic on  
“Intraoperative Recruitment Manoeuvres” today!