

## Dräger FPS®-COM 7000 Start-up and use

The FPS®-COM 7000 enables contact with all wearers of respiratory protection without needing separate radio equipment – while keeping your hands free. The communications unit, integrated with the mask, sends a clear signal for better voice quality and automatically suppresses background noise. The following explains the start-up, use and cleaning of the communications unit. This poster is not intended to replace the user manual, but simply to give a supplementary overview. Any use of the device requires knowledge and understanding of the user manual.

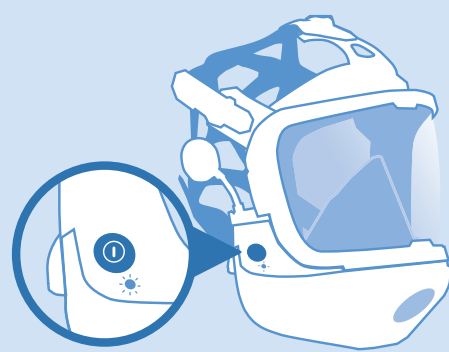


### Donning the mask



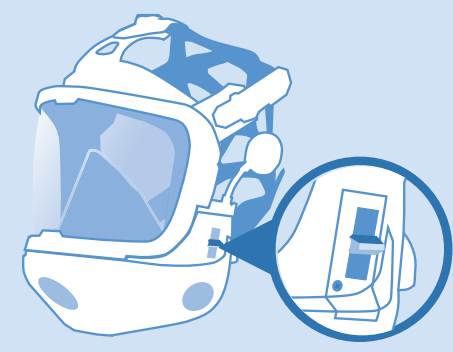
The respiratory protection full-face mask is donned, then the fire protection hood. The earpiece sits over the fire protection hood. The helmet is worn over both.

### Switching on the device



Hold the ON/OFF switch for approx. 1 second. The functional readiness of the communications unit, as well as other operating states (see user manual) are presented visually and audibly.

### Selecting groups



Firefighters in groups of up to 10 members can communicate. Each communications unit is assigned to a specific group, which is set using a group selector switch. The assignment of the teams to groups should be determined before deployment.

### Function test: Group communication



Establishment of the connection is completed within a few milliseconds and is confirmed by an audible signal.

### Function test: Voice amplification



Voice amplification enables clear communication – even in deployments in chemical protective suits with people in close proximity.

### Function test: Connection to tactical radio



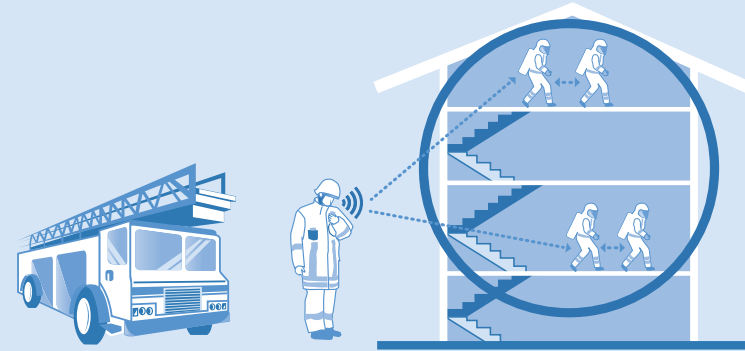
Switch on the radio and perform the function test by pushing the push-to-talk button.

### Communication within the team



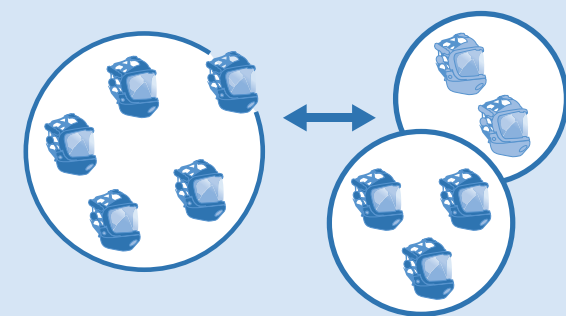
Communication within the team is voice-activated. The firefighters have their hands free for the mission. Group radio and the relaying of information within the team are activated simply by speaking.

### Communication between command centre and several teams



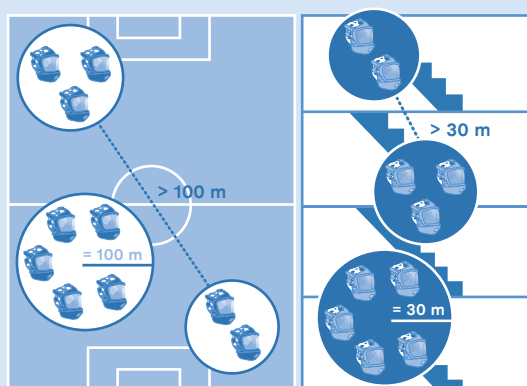
Team leaders communicate via the push-to-talk button with the command centre and incoming radio messages from the command centre interrupt the group radio of the radio wearer.

### Response to a break in the connection



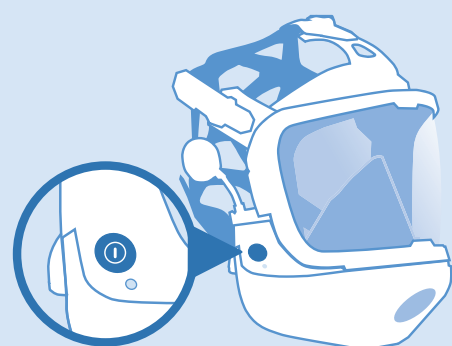
If a wearer of the device reaches the limit of the radio's operating range, communication with the group is broken off. If the group connection of two device wearers is broken, they can still communicate with each other. An audible confirmation is produced when the device wearers rejoin the group.

### Operating range



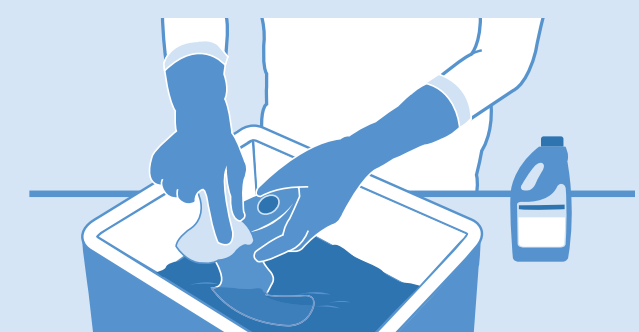
The operational range for communications is 100m in the open and 30m inside buildings.

### After Use



The communications unit is switched off using the ON/OFF button. After 4 minutes of inactivity, the unit powers down. Power down is halted by speaking into the mask.

### Cleaning



We recommend that the communications unit be disassembled from the full-face mask respiratory protection and cleaned with a solution of lukewarm water and Sekusept® cleaner using a soft cloth. When manually cleaning the mask, the communications unit can remain mounted. More details are available in the user guide.