



Dräger Mobile Patient Watch Clinical Applications

Your access to patient information anytime, anywhere. With Mobile Patient Watch, you receive location-independent access to clinical patient information on mobile devices, tablets or desktop PCs. Customise the application to your care area's needs and perform supervision and remote consultancy based on the near real-time data from Infinity Dräger patient monitors, ventilators and anaesthesia devices.

Highlights

Workflow efficiency

Mobile Patient Watch is an innovative solution that assists with your workflows by providing remote access to clinical patient information. It enables you to view waveforms, vital signs and trends from connected Dräger patient monitors, ventilators and anaesthesia devices in near real-time. Furthermore, Mobile Patient Watch can be integrated into existing alarm management systems via a deep link to provide physiological context information in the case of an alarm. Mobile Patient Watch offers versatile viewing options, including:

- **Multi-patient view:** Provides a status overview on all patients of a selected unit with key parameters.
- **Monitoring view:** Shows patient monitor waveforms, parameters and minitrends for a selected patient.
- **Anaesthesia view:** Shows inspiratory and expiratory anaesthesia gas values and ventilation waveforms, parameters, settings and minitrends for a selected OR patient.
- **Ventilation view:** Shows ventilation waveforms, parameters, settings and minitrends for a selected ICU patient.
- **Numeric view:** Shows aggregated view of parameters from a patient's connected patient monitor and additionally either a ventilator or anaesthesia machine.
- **Tabular trends view:** Shows the trended values of recorded vital signs and parameters at regular intervals for a selected patient.
- **ECG view:** Visualises all available ECG leads per patient.

Easy accessibility

The Mobile Patient Watch allows you to use it flexibly wherever you need it. A wide range of iOS, Android and Windows-based end device are supported, ranging from mobile phones to tablets and desktop PCs. The application supports BYOD (Bring Your Own Device) strategies so that it can run on your compatible existing end devices. Please refer to the technical data for more information about recommended user devices.

Flexible configuration

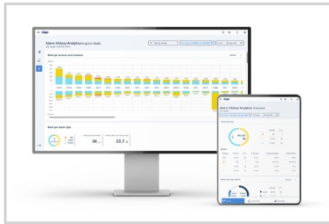
Mobile Patient Watch Pro was designed to meet the unique demands of every user.

- **Focus:** Bookmark high priority patients in the “My Patients” tab to tailor the application to your needs.
- **Accessible patient information:** Connect a wide range of compatible Dräger patient monitors and therapy devices for comprehensive patient insights.
- **System integration:** Configure a deep link to the application in your other clinical information systems.

Designed to keep patient information secure

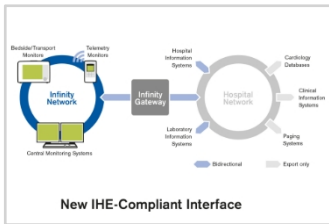
Mobile Patient Watch is an HTML5 web application that keeps patient information protected. Data from the Infinity network is encrypted when transferred and kept on-premise, from where it can be accessed by authenticated users throughout the hospital or via a VPN connection from outside the hospital network.

Software



Dräger Alarm History Analytics

- Provides continuous insights from clinical alarms
- Supports alarm management strategy with customised analysis
- Identifies causes of high ICU patient alarm quantities
- Enables to identify countermeasures for alarm reduction



Infinity® Gateway Suite

- Facilitates data exchange between Infinity Network and hospital information systems.
- Featuring data exchange formats in HL7 and WinAccess API for the highest level of custom integration.
- Allows for the import of lab results and patient demographics to the Infinity Acute Care System, also export of clinical data to electronic medical records.

Connective Products



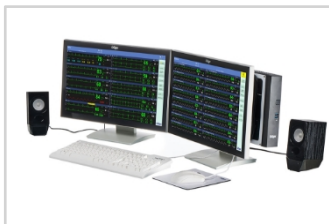
Dräger Atlan A100/A100 XL

- Electronically controlled and electrically driven piston ventilator technology helps deploy lung protective ventilation measures
- Designed to deliver minimal- and low-flow anaesthesia seamlessly
- Fresh-gas and anaesthetic agent delivery still possible even when the machine is switched-off



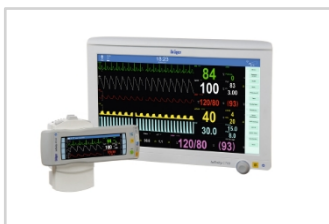
Dräger Evita V800

- Seamless transition between O₂ therapy, NIV, and invasive ventilation modes.
- Individualised lung protective ventilation for all patient groups with advanced diagnostic tools.
- Support of a synchronised way for quick and efficient weaning.
- Streamlined user interface allows intuitive, efficient operation and guidance.



Infinity CentralStation Wide

- Integrates and centralizes real-time monitoring, alarm and retrospective data to support clinical workflow
- Supports up to 32 patients and up to 64 patients for alarm surveillance.
- Storage of up to 120 hours of event and full disclosure storage
- Displays data and alarms from Dräger ventilators and anesthesia machines.



Infinity® Acute Care System

- C500 and C700 integrates physiological monitoring with a medical-grade workstation for real-time vital signs and clinical data management.
- Customize monitoring display based on your department and patient acuity
- Access your hospital web-based clinical applications using configurable tabs without obscuring active monitoring



Infinity® M540

- Designed for intra-hospital transport and the flexibility for advanced critical care
- Single handed undocking and docking helps to ensure fast transport to Pick and Go
- Stores up to 72 hours of trends and events, accessible upon docking. Storage expands to 96 hours with the C500 or C700.
- When using during transport with integrated measurements, M540 can



Zeus® Infinity® Empowered

- Integrates lung-protective ventilation functionalities and comprehensive monitoring
- Cost saving gas delivery technology for TCA and quantitative anaesthesia

Not all products, features, or services are for sale in all countries. Trademarks mentioned herein are the property of its respective owner. Trademarks may be owned by Drägerwerk AG & Co. KGaA (Dräger) or its affiliates in certain countries and not necessarily in the country in which this material is released. Visit www.draeger.com/trademarks for the current status of Dräger's trademarks.

Draeger Arabia Co.Ltd.

P.O.Box 365642
Riyadh 11393 Kingdom of Saudi Arabia
Tel: 0118288200

Corporate Headquarters

Drägerwerk AG & Co. KGaA

Moislinger Allee 53-55
23558 Lübeck
Germany

