

## New IHE-Compliant Interface

# Infinity® Gateway Suite Patientmonitorer

Get the most out of your clinical information systems. Integrate data from Dräger monitoring and therapy devices with lab results, entries in electronic medical records and clinical information systems across hospital departments. Infinity® Gateway applications, interfaces and developer tools enable you to exchange information for a more comprehensive view of your patients.

# Highlights

## **Makes comprehensive clinical data available at the point-of-care**

Infinity Gateway's HL7 and ASTM interfaces facilitate the exchange of patient information between the Dräger Infinity Network, and/or the SDC network, and other hospital systems, enabling you to see a more complete picture of your patients.

You can automatically import HIS admission data directly to the patient monitor. Another option allows import and export of laboratory data to and from the patient monitor.

## **Import/Export interfaces**

You can also export data from Dräger vital signs monitors and connected therapy devices, including ventilators and anesthesia machines, to third-party systems such as paging and alarm systems, electronic medical records (EMR), hospital information systems (HIS), lab information systems (LIS), and clinical information systems (CIS).

- HL7 2.3 protocol enables export of vital signs, solicited and unsolicited import of admission data, and import and export of laboratory data
- IHE-compliant (Integrating the Healthcare Enterprise) HL7 options utilize the 2.6 HL7 protocol, enabling export of vital signs and alarms to other IHE-compliant systems as well as the import of patient admission data
- Paging interface exports alarm data from Infinity telemetry and bedside/transport monitors to the hospital's paging system (supports alphanumeric pagers using TAPI.7 and ESPA 4.4.4 protocols)
- ASTM stat lab interface connects Infinity monitors to 'stat' laboratory devices that use the ASTM protocol
- 12-lead export interface, as part of the API option, exports 12-lead rest ECG data reports from the Infinity Network to cardiology databases
- WinAccess API Developer Interface allows 3rd party applications access

## **Remote viewing applications access near real-time patient information**

View near-real-time monitoring data on a PC on the hospital network with the Infinity® PatientWatch® option. This includes visual alarms, vital signs, waveforms, full view of 12-lead ECGs and trends in graphical and tabular format. You can see respiratory information and lab values on a networked PC running the Infinity® VentWatch® option.

## **Supports patient safety with efficient workflows for timely decision-making**

Integrating patient data supports continuity-of-care and helps reduce expenses associated with combining data manually and inadvertently duplicating tests. Spend less time looking for, and entering, patient data and more time connecting with your patients. The clinical data comes to you, on a network supported PC with access to the hospital network, so you can make timely, well-informed decisions.

Infinity Gateway's Alarm History Database records alarms for all Dräger devices connected to the Infinity Network, allowing collection and analysis of clinical alarms. This can be used to define mitigation measures for reducing non-actionable alarms and hence alarm fatigue. Its Time Master feature synchronizes the time on monitors and therapy devices connected to the Infinity Network so that patient data are accurately correlated for review and in the patient record.

### **Develop applications and databases for clinical research and reporting**

Infinity Gateway WinAccess API enables you to cost-effectively develop custom applications that support in-house clinical research projects. You will be able to consolidate and export information to management systems and databases for data analysis and reporting. The WinAccess API developers toolkit makes it possible to interface with third-party and custom applications, such as intake and assessment systems.

Data access tools enable you to customize the presentation of clinical data, via either a sophisticated Application Programming Interface (API) for C and C++, or an easy-to-use utility that exports ASCII text files for legacy systems.

### **Flexible deployment opportunities**

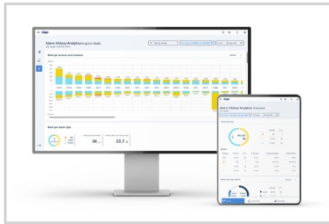
Infinity Gateway supports VMware® ESXi™ Hypervisor technology facilitating cost-effective software deployment and reduction of total cost-of-ownership.

For improved IT uptime, a software option for a Temporary Software License allows a backup server to store the enabled options, operating up to 72 hours (no licensing dongle needed).

### **Future-proof system integration**

The Service-oriented Device Connectivity (SDC) protocol supported by the Connectivity Converter CC300 is an international standard in the ISO/IEEE 11073 series. SDC makes safe and dynamic connectivity in the hospital possible, allowing interoperability of medical devices and information systems. Medical Technology companies worldwide are incorporating SDC into their present and future portfolios in order to advance the scope and potential of system interoperability.

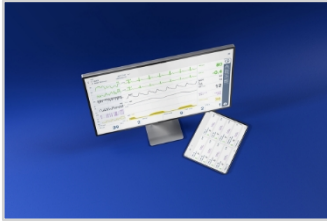
# Software



## Dräger Alarm History Analytics

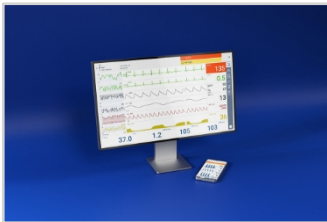
- Provides continuous insights from clinical alarms
- Supports alarm management strategy with customised analysis
- Identifies causes of high ICU patient alarm quantities
- Enables to identify countermeasures for alarm reduction

# Connective Products



## Dräger Mobile Patient Watch

- Provides location-independent access to clinical patient information
- Enables data-based supervision and remote consultancy
- Supports patient care and alarm management workflows
- Increases data accessibility from mobile or desktop PCs



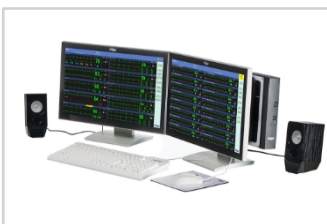
## Dräger Mobile Patient Watch Pro

- Provides location-independent access to clinical patient information
- Enables remote patient status checks including alarm indicators
- Supports patient care and alarm management workflows
- Increases data accessibility from mobile phones, tablets or desktop PCs



## Infinity Acute Care System

- C500 and C700 integrates physiological monitoring with a medical-grade workstation for real-time vital signs and clinical data management.
- Customize monitoring display based on your department and patient acuity
- Access your hospital web-based clinical applications using configurable tabs without obscuring active monitoring



## Infinity CentralStation Wide

- Integrates and centralizes real-time monitoring, alarm and retrospective data to support clinical workflow
- Supports up to 32 patients and up to 64 patients for alarm surveillance.
- Storage of up to 120 hours of event and full disclosure storage
- Displays data and alarms from Dräger ventilators and anesthesia machines.



## Infinity M540

- Designed for intra-hospital transport and the flexibility for advanced critical care
- Single handed undocking and docking helps to ensure fast transport to Pick and Go
- Stores up to 72 hours of trends and events, accessible upon docking
- Advanced measurements are easily added without compromising cable management

Alla produkter, funktioner och tjänster är inte till salu i alla länder. Varumärken som nämns i den här texten tillhör respektive ägare. Varumärken kan ägas av Drägerwerk AG & Co. KGaA (Dräger) eller dess dotterbolag i vissa länder, men inte nödvändigtvis i landet där detta material publiceras. Besök [www.draeger.com/trademarks](http://www.draeger.com/trademarks) för att få aktuell information om Drägers varumärken.

### **Dräger Sverige AB - Sjukhus**

Gamlestadsvägen 18C  
415 02 Göteborg

Tel: +46 10 344 40 00

### **Corporate Headquarters**

#### **Drägerwerk AG & Co. KGaA**

Moislinger Allee 53-55  
23558 Lübeck  
Germany

