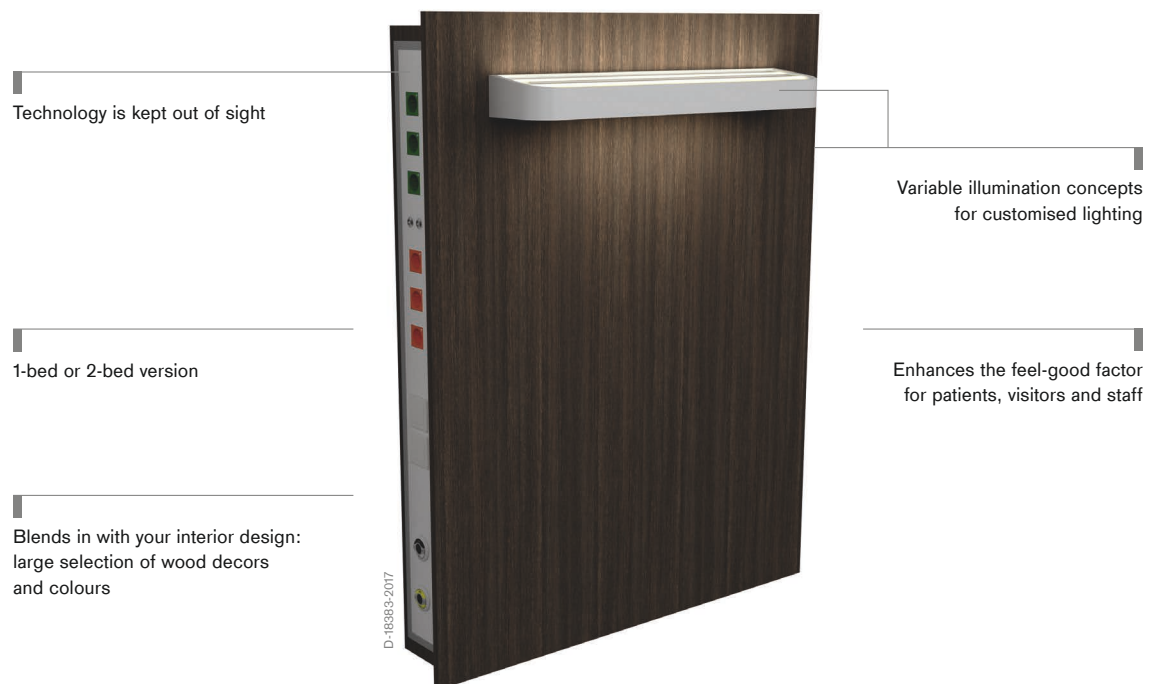


Linea Ambience Your wall supply unit as a design element

Modern wall supply unit designed to create an especially patient-friendly atmosphere in the room. The Linea Ambience helps to create an ergonomic workplace and at the same time acts as a versatile design element.



Benefits

Solutions for you and your patients

The Linea Ambience wall supply unit is a member of the Linea product family. It is designed to make routine work more efficient whilst enhancing the feel-good factor for patients (healing environment), visitors and staff. The main features of this product family are that the components can be customised to suit the existing infrastructure, there are a wide range of design options available and all products and accessories are fully compatible with one another.

Feel-good factor and functionality

The sophisticated design helps to create an ergonomic workplace with a range of illumination options. The large, customisable faceplate creates a sense of spatial well-being and conceals the gas and power outlets fitted into the equipment plates at the sides. At the same time it provides easy access to the outlets and plug-in ward equipment. The Linea Ambience therefore provides ample space for equipment but the technology itself is kept well out of sight. The elegant design and perfectly integrated media terminals ensure maximum safety, ease of cleaning and hygiene. This makes the Linea Ambience perfect for sophisticated care areas or specialised areas with specific requirements in terms of design and interior decor.

Patient-friendly design

The Linea Ambience caters for the trend towards design-optimised patient rooms. Colours can enhance the well-being of patients and thereby promote the healing process and create a positive environment for clinical staff. The housing and the faceplate are available in a range of wood decors; for the service plates a range of RAL colours is available. This enables the Linea Ambience to be perfectly integrated into an existing interior design concept and colour scheme or to be used as a design element in its own right.

Variable illumination concepts

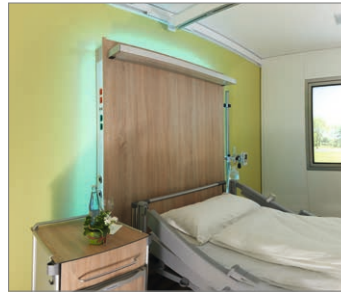
The Linea Ambience is perfectly suited to creating individual lighting concepts. A reading light, indirect interior lighting and a night light can be integrated. Either fluorescent tubes (T5) or LEDs can be used. Furthermore, a surrounding RGB light can be used to generate a special atmosphere of well-being.

Details



D-7207-2016

Easy access to outlets



D-7215-2016

Surrounding RGB light creates an atmosphere of well-being



D-4121-2016

Choice of available wood decors for the housing



D-4120-2016

Selection of available colours for the side equipment plates

Examples of use



D-49016-2016

One-bed version of the Linea Ambience

The one-bed version of the Linea Ambience offers a variety of positions for gas, electrical and data outlets in the service plates at the sides (left and right) at the head of the bed. A variety of illumination options are available. It is recommended to attach a lighting unit to the front plate which can be equipped with a choice of direct reading light, indirect interior lighting and night light.



D-49016-2016

Two-bed version of the Linea Ambience

In the two-bed version, the Linea Ambience offers outlet points for gas, power and data between the two beds in the service plates on the side facing each bed. It can be equipped with a night light or with indirect ambient lighting in the form of an RGB light strip running all the way round or with a dimmable single-colour LED strip.

Related products

D-11430-2016



GeminaDUO

Whether for an emergency room, a recovery room or an intensive care unit, the Dräger GeminaDUO is just perfect for your workplace. The wall supply unit lets you choose from a wide range of configurations and options, helping to create an efficient and highly flexible workplace.

D-18385-2017



Linea Flush

The Linea Flush is both modular and space-saving, it can be used anywhere meeting special requirements in a wide range of areas. The space-saving design enables it to be used for a wide range of applications beyond or in addition to conventional wall supply units.

D-18381-2017



Linea Living

The Linea Living blends in perfectly with your interior design. This versatile and elegant wall supply unit can be individually designed and configured for patient-friendly care.

D-11431-2016



Linea

Linea N, Linea IM and Linea I offer the perfect combination of ergonomics and economy. These wall supply units can be individually configured to provide customised electrical, gas and IT supply solutions with illumination options for a variety of general and specialised applications.

Technical data

Linea Ambience

Height x depth x width	One-bed version: 1,600 x 200 x 1,260 mm; Two-bed version: 1,600 x 200 x 560 mm
Lighting	LED light strip (RGB or white, dimmable) at top and sides, Night light (bottom) Attached light (not included in order)
Rows of outlets	One row at each side (left and right)
Outlet spacing	There is at least 200 mm between gas terminals (for flammable or oxidising gases) and earthed power sockets. The minimum distance between two earthed power sockets is approx. 70 mm and between two gas terminals approx. 100 mm.
Components	Electrical sockets in various colours, with or without indicator light and in a variety of national standards, earth pins, gas terminals for medical gases, low-voltage devices such as nurse call, RJ45 data ports, telephone sockets, etc.
Wall mount	One-bed: max. 120 kg/m, shear force per stud bolt (M10) 500 N – Two-bed: max. 90 kg/m, shear force per stud bolt (M10) 500 N.
Media connection	Type of installation and points of supply as required – depending on the structural conditions.
Colour service plates	17 standard RAL colours
Equipment plates	
Colour of housing	a variety of wood decors
Medical device	Complies with MDD (Medical Device Directive) Medical Electrical Devices IEC 60601-1 and IEC 60601-1-2, Medical Supply Units ISO 11197

Notes

Notes

Not all products, features, or services are for sale in all countries.
Mentioned Trademarks are only registered in certain countries and not necessarily in the country in which this material is released. Go to www.draeger.com/trademarks to find the current status.

CORPORATE HEADQUARTERS

Drägerwerk AG & Co. KGaA
Moislinger Allee 53–55
23558 Lübeck, Germany

www.draeger.com

Manufacturer:

V.T.S. Vision Technology Systems GmbH
Arnsberg, Deutschland
The quality management system of V.T.S Vision Technology Systems GmbH is certified according to ISO 13485, ISO 9001 and Annex II of Directive 93/42/EEC (medical devices).

REGION DACH

Drägerwerk AG & Co. KGaA
Moislinger Allee 53–55
23558 Lübeck, Germany
Tel +49 451 882 0
Fax +49 451 882 2080
info@draeger.com

REGION EUROPE

Drägerwerk AG & Co. KGaA
Moislinger Allee 53–55
23558 Lübeck, Germany
Tel +49 451 882 0
Fax +49 451 882 2080
info@draeger.com

REGION MIDDLE EAST, AFRICA

Drägerwerk AG & Co. KGaA
Branch Office
P.O. Box 505108
Dubai, United Arab Emirates
Tel +971 4 4294 600
Fax +971 4 4294 699
contactuae@draeger.com

REGION ASIA PACIFIC

Draeger Singapore Pte. Ltd.
25 International Business Park
#04-20/21 German Centre
Singapore 609916
Tel +65 6308 9400
Fax +65 6308 9401
asia.pacific@draeger.com

REGION CENTRAL AND SOUTH AMERICA

Dräger Panama Comercial
S. de R.L.
Complejo Business Park,
V tower, 10th floor
Panama City
Tel +507 377 9100
Fax +507 377 9130
contactcsa@draeger.com

Locate your Regional Sales Representative at:
www.draeger.com/contact

