

Dräger
CONNECT
Available on
Dräger Connect

Lung Protective Ventilation Analytics Hospital Data Analytics

Identify actions to improve patient ventilation therapy with Lung Protective Ventilation Analytics - Anaesthesia. The automatically generated dashboard provides insight into the quality of ventilation by analysing parameters, modes, and recruitment manoeuvres. Enable a consistent implementation of lung protective ventilation practices and benchmark ventilation performance against pre-defined goals to achieve a high standard of ventilation therapy.

Benefits

Enables a consistent implementation of lung protective ventilation practices

Lung protective ventilation practices are known to reduce the incidence of post-operative pulmonary complications*, which are associated with negative outcomes, longer length of stay and increased cost of care. By analysing data from anaesthesia machines in all operating rooms in a hospital, Lung Protective Ventilation Analytics enables anaesthesiologists to benchmark their ventilation performance against pre-defined goals to achieve a high standard of lung protective ventilation therapy.

- View insights into ventilation quality parameters, ventilation modes and lung recruitment manoeuvres
- Configure a target range of ventilation parameter settings to meet the standard operating procedures
- Box plots indicate the ventilation quality for a patient or cohort according to the configured target range

* Guldner, A. et al. (2015). Intraoperative protective mechanical ventilation for prevention of postoperative pulmonary complications: a comprehensive review of the role of tidal volume, positive end-expiratory pressure, and lung recruitment maneuvers. *Anesthesiology*, 123(3), 692-713.

Provides benchmarking of ventilation performance over time

With Lung Protective Ventilation Analytics, you can strive for a continuous improvement in ventilation outcomes for a wide range of patients.

- Compare ventilation therapy delivered over different time periods based on quality indicators
- Access a single case view to visualise ventilation performance metrics about a specific operation
- Filter for specific ORs, cases, dates, time frames and ventilation modes

Customisable to your personal needs

The dashboard of Lung Protective Ventilation Analytics can be adapted to support your individual ventilation strategy. Customise the default ventilation parameter target settings and apply time and content filters to visualise your desired data sets in the dashboard.

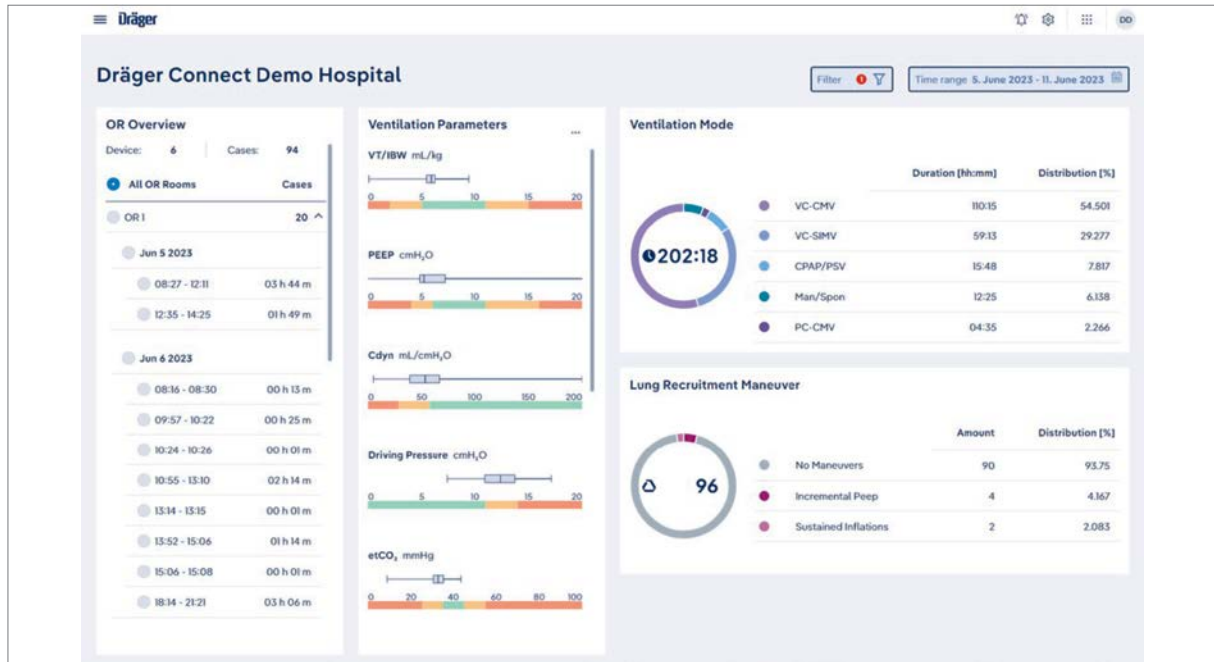
High level of data security

The Dräger Connect cloud solution is designed with security and data privacy in mind. Device data is transferred, collected and analysed. Data is encrypted and sent securely from the ServiceConnect® Gateway installed in the hospital network to a high security cloud storage. Authorised users can access the services of Dräger Connect from desktop PCs or mobile devices via a secured connection to the cloud server.

Accessible on Dräger Connect: Our central platform for your digital health services

In addition to Lung Protective Ventilation Analytics, Dräger Connect also equips you with dashboards for the analytics of your fleet management, OR readiness, anaesthesia efficiency and alarm management (additional subscriptions required).

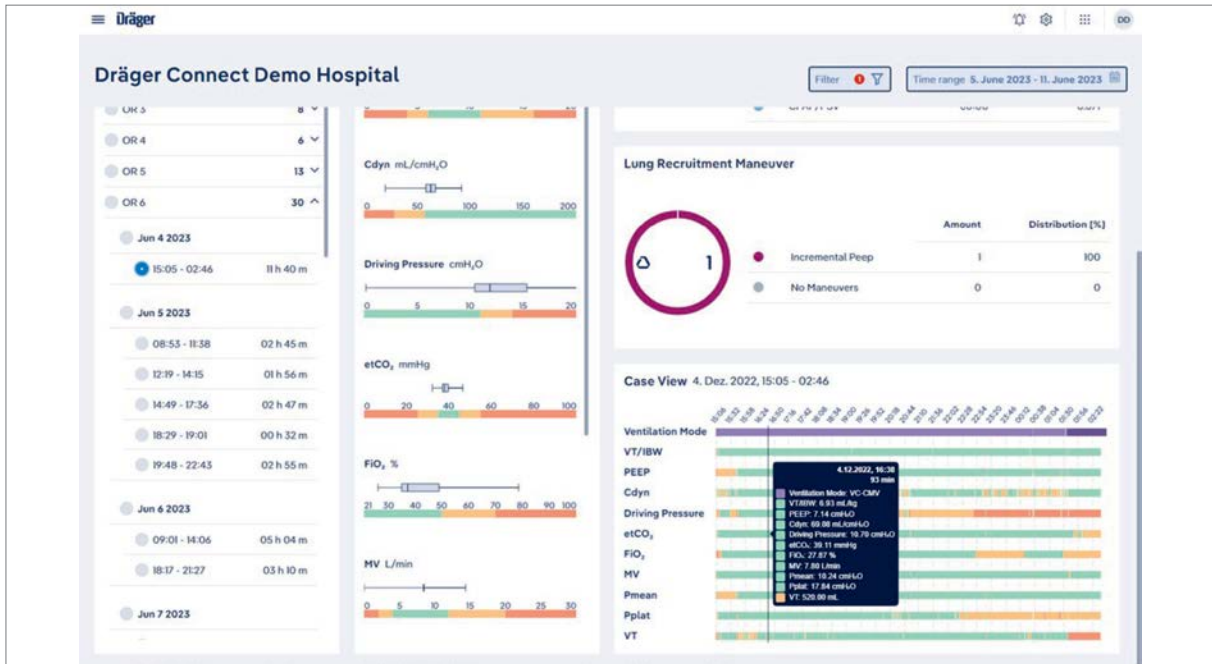
The dashboard at a glance



Select between your operating rooms and cases to discover ventilation quality per parameter, the used ventilation modes and performance of lung recruitment manoeuvres.



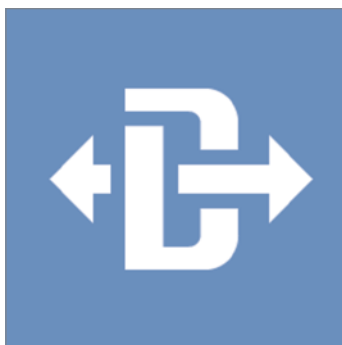
Configure the target range for all parameters and match the dashboard to your standard operating procedures.



D-8521-2023

Open the case view to access more detailed information.

System Components



D-5332-2022

ServiceConnect® Gateway

The ServiceConnect® Gateway (SCG) supports uptime of Dräger products by enabling access to log files, firmware distribution via the network, TLS certificate management and remote IT support. It also serves as enabler for Data Analytics services. The SCG is a server application running in the hospital IT infrastructure on standard windows operating systems. It requires permanent internet connectivity to Dräger using a state-of-the-art secure network communication.

System Components

D-6833-2011



Dräger Perseus® A500

The ceiling-mounted version of the Dräger Perseus® A500 combines the award-winning, ergonomic design of the Perseus® A500 with the mobility of a ceiling supply unit (CSU). In combination with Dräger Movita®, this floor-independent anaesthesia device offers a completely flexible and efficient workplace.

D-5542-2022



Dräger Atlan® A350/A350 XL

The new platform offers flexibility for most spatial conditions. The high precision piston ventilator supports lung protective ventilation measures and a comprehensive set of parameters assist decision-making support. The Atlan A350/XL can be networked to communicate bi-directionally and securely with other networked devices to share data and information that can help to increase efficiency and reduce errors in anaesthesia.

D-12642-2018



Dräger Atlan® A300/A300 XL

The new platform offers flexibility for most spatial conditions. The high precision piston ventilator supports lung protective ventilation measures and a comprehensive set of parameters assist decision-making support. The Atlan A300/XL can be networked to communicate bi-directionally and securely with other networked devices to share data and information that can help to increase efficiency and reduce errors in anaesthesia.

Related Products

D-6389-2023



Dräger OR Companion

Check the live status of your operating rooms and support an effective management of the OR department with the OR Companion. Upgrade the solution with the Self-Test Tracker option to streamline staff workflows for the daily anaesthesia system test procedure, protect patients and achieve a high uptime of anaesthesia workstations.

D-6380-2023



Dräger Gas Consumption Analytics

Discover insights into your anaesthetic gas consumption with Gas Consumption Analytics. The application helps you to monitor the implementation of lung-protective ventilation strategies and derive financial insights from the agent consumption of connected anaesthesia devices by Dräger. Utilise the application to create transparency on consumption uptake, efficiency, cost and applied fresh gas flows.

D-6379-2023



Dräger Device Utilization Analytics

Improve the security, performance, and uptime of your networked medical device fleet with Device Utilization Analytics. The solution consolidates relevant information about the utilisation of your networked devices. This enables you to easily monitor device status in near real-time, review historical utilisation information and check the current software status of your Dräger medical devices.

D-4263-2023



Dräger Mobile Patient Watch

Your access to patient information anytime, anywhere. With Mobile Patient Watch, you receive location-independent access to clinical patient information on mobile devices, tablets or desktop PCs. Customise the application to your care area's needs and perform supervision and remote consultancy based on the near real-time data from Infinity® Dräger patient monitors, ventilators and anaesthesia devices.

Technical Data

Compatible end devices

Desktop & Laptop PCs	Operating system	Windows 10 or higher
	Screen resolution	Full HD screen (1920 x 1080 pixels) recommended for best visual performance
	Recommended web browser	Microsoft Edge, Mozilla Firefox, Google Chrome
	Internet connection	Internet access via web browser shall support secure connections (https) and allow cookies
Tablet PCs	Operating system	Latest OS version recommended
	Screen resolution	Minimum of 8.3 inches (1488 x 2266 pixels) recommended for best visual performance
	Recommended web browser	Apple Safari, Microsoft Edge, Mozilla Firefox, Google Chrome (for Windows-based systems)
	Internet connection	Internet access via web browser shall support secure connections (https) and allow cookies

System requirements

Compatible devices	Perseus® A500, Atlan® A300, Atlan® A300 XL, Atlan® A350, Atlan® A350 XL
Perseus® A500 software version	Version 2.03 or higher
Atlan® family software version	Version 1.0 or higher
Software options	“Lung recruitment” option is mandatory to display the respective insights in the dashboard
Operating room configuration	Dräger OR Companion required to manage operating rooms and assign anaesthesia devices
Time synchronisation	Network Time Protocol (NTP) synchronisation recommended for connected anaesthesia devices

ServiceConnect® Gateway server platform requirements

ServiceConnect® Gateway software version	Version 2.38.2 or higher
System host	Workstation or equivalent Virtual Machine (VM)
Operating system	Windows 64bit (Windows 10 x64, Windows Server 2016 R2 x64 or higher recommended)
Browser (for SCG configuration interface)	Microsoft Edge, Mozilla Firefox, Google Chrome
CPU	Up-to-date multi-core CPU with 2GHz or higher

Technical Data

Storage	25 GB minimum free hard drive space for SCG application
Memory*	8 GB RAM minimum
Video	1280 x 1024 or higher, 32bit or more colours
Network	Two ethernet adapters (for connection to medical device network and internet / hospital network)
Uninterruptable Power Supply (UPS)*	Recommended to ensure continuous operation during brief losses of power and to protect the system from power line disturbances

* UPS and memory requirements may vary depending on the amount of connected and monitored devices

Additional customer infrastructure requirements

Internet connection	Internet connection is required to establish a secured and encrypted connection for data transfer and gateway communication
VPN connection (optional)	A VPN connection (Client VPN or Site-To-Site) via Dräger ServiceConnect® Remote Data Connection (RDC) infrastructure for easy and secure remote access and IT system monitoring is installed on demand

Microsoft, Windows, Windows Server and Edge are registered trademarks of Microsoft Corporation.

Chrome is a registered trademark of Google LLC.

Firefox is a registered trademark of Mozilla Foundation.

Safari is a registered trademark of Apple Inc.

The Dräger name, Dräger logo, Infinity, Perseus, Atlan and ServiceConnect are registered trademarks of Dräger.

Not all products, features, or services are for sale in all countries.
Mentioned Trademarks are only registered in certain countries and not necessarily in the country
in which this material is released. Go to www.draeger.com/trademarks to find the current status.

CORPORATE HEADQUARTERS

Drägerwerk AG & Co. KGaA

Moislinger Allee 53-55
23558 Lübeck, Germany
www.draeger.com

Region Europe

Drägerwerk AG & Co. KGaA

Moislinger Allee 53-55
23558 Lübeck, Germany
☎ +49 451 882 0
☎ +49 451 882 2080
✉ info@draeger.com

Canada

Draeger Medical Canada Inc.

2425 Skymark Avenue, Unit 1
Mississauga, Ontario, L4W 4Y6
☎ +1 905 212 6600
Toll-free +1 866 343 2273
☎ +1 905 212 6601
✉ canada.support@draeger.com

REGION MIDDLE EAST, AFRICA

Dräger Safety AG & Co. KGaA

Branch Office
P.O. Box 505108
☎ +971 4 4294 600
☎ +971 4 4294 699
✉ contactuae@draeger.com

Manufacturer

Drägerwerk AG & Co. KGaA

Moislinger Allee 53-55
23558 Lübeck

Region Central and South America

Dräger Indústria e Comércio Ltda.

Al. Pucurui - 51 - Tamboré
06460-100 Barueri, São Paulo
☎ +55 (11) 4689-4900
✉ relacionamento@draeger.com



Locate your Regional Sales
Representative at:
www.draeger.com/contact