

Available on
My Dräger

Dräger OR Companion Hospital Data Analytics

Check the live status of your operating rooms and support an effective management of the OR department with the OR Companion. Upgrade the solution with the Self-Test Tracker option to streamline staff workflows for the daily anaesthesia system test procedure, protect patients and achieve a high uptime of anaesthesia workstations.

Dräger

Technology for Life

Benefits

Status information on your induction and operating rooms

The OR Companion provides you with workflow support for the management and readiness of your operating rooms. The software allows you to view status information of all networked Perseus A500 and Atlan family anaesthesia machines across the hospital.

- Receive a dashboard with all induction and operating rooms of your hospital and the equipped anaesthesia devices per room, as well as their device and gas supply data.
- View the status of each anaesthesia device indicated as online, offline or in use.
- Check the live runtime of all operating rooms in use.
- Analyse your consumption of Infinity ID consumables per device or department and manage required exchange intervals of consumables.

System test insights with Self-Test Tracker (Optional add-on)

Compliance with the recommendations for daily system test procedures helps to protect patients by putting devices in a safe operating condition and thus preventing adverse events during anaesthesia.^{[1],[2]} The centralised overview of system test results in the Self-Test Tracker allows you to confirm that all system tests have been completed successfully and that procedures can start safely and exactly whenever planned.

The Self-Test Tracker functionality supports high uptime and safe operation of anaesthesia workstations.

- **Automates important steps of the system test procedure:** With the unique Auto On function of our Perseus A500 and Atlan family workstations, the system tests can be initiated automatically at a pre-configured time and will already be completed when staff enter the OR department in the morning. With a glance at the Self-Test Tracker from anywhere within the hospital, staff are informed about the operational readiness of the anaesthesia machines and can, in case of complications, quickly shift their focus to troubleshooting.
- **Enables fast troubleshooting to reduce downtime:** Operating rooms contribute strongly to the financial success of a hospital and operating room downtime, for example because devices are inoperable, results in financial losses.^[3] In case an anaesthesia machine system tests isn't completed successfully, the Self-Test Tracker acts as an assistance system and immediately provides staff with error information and troubleshooting steps.
- **Supports a secure operation:** Gas leakage values are shown per anaesthesia machine to indicate the secure operation of a device.
- **Enhanced fleet management opportunities:** The software provides staff with insights to the runtime and system test history of a connected anaesthesia device which increases transparency on the device's performance.
- **Indicates compliances with standard operating procedures:** Quality assurance reports show the number of cases performed with fully operational or limited operational anaesthesia devices for a selected time frame.

Customisable to your individual needs

The OR department of every hospital is unique. The dashboard of the OR Companion can be adapted to display all your operating rooms and induction rooms with their individual names and the allocated anaesthesia workstations with their individual name or serial number.

Benefits

High level of data security

Our solutions are designed with data security and privacy in mind. Only device data is exported to the Dräger Service Cloud platform. All information is securely stored in regionalised data centers and protected through consistent encryption of data in transit and at rest. Strong authentication and authorisation controls safeguard access, while clear software-based tenant separation guarantees data isolation. Our ISO/IEC 27001 certification for the development, provision and operation of our cloud-based decision support solutions demonstrates our commitment to maintaining the high standards of information security.

Accessible on My Dräger portal: Easy access to digital applications and services

The My Dräger Portal offers 24/7 web-based access to all essential Dräger services and digital applications. Effortlessly manage devices, orders, user profiles, and benefit from transparent workflows, comprehensive support, and a growing suite of digital services - all in one place.

[1] Prien T. et al. (2019). Funktionsprüfung des Narkosegerätes zur Gewährleistung der Patientensicherheit – Empfehlung der Kommission für Normung und technische Sicherheit der DGAI. *Anästhesiol & Intensivmed.*; 2019(60), 75-83.

[2] Mehtap S. P.; Eisenkraft J. B.; Posner K. L.; Domino K. B. (2013). Patient Injuries from Anesthesia Gas Delivery Equipment: A Closed Claims Update. *Anesthesiology* 119, pp. 788-795.

[3] Giroto, J. A.; Koltz, P. F.; Drugas, G. (2010). Optimizing your operating room: Or, why large, traditional hospitals don't work. *International Journal of Surgery*, 8(5), pp. 359-367.

OR Companion at a glance

Rooms overview
Last updated: 8 Dec 2025, 14:28

Ready: 8 | Partially ready: 0 | In operation: 3 | Not available: 1 | Others: 4

Room	Status	Details
OR 01	Device is in operation	5 m, Started: 14:34 PM
OR 02	User input required	Battery low, Is currently charging at 12%, Auto On: Sun 06:30
OR 03	User input required	Auto On: Fri 12:00
OR 04	System test OK	Leakage: 77 mL/min, Last leakage test: 1 m ago
OR 05	User input required	Battery low, Current charge at 27%, Auto On: Wed 15:10
OR 06	System test OK	Auto On: Fri 12:00
OR 07	System test OK	Battery low, Is currently charging at 33%
OR 08	User input required	Leakage: 113 mL/min, Last leakage test: 5 m ago
OR 09	Device is in operation	1 m, Started: 14:28 PM
OR 10	System test OK	Leakage: 71 mL/min, Last leakage test: 53 m ago
OR 11	System test failed	The APL valve or the breathing bag have leakage. Man/Spon mode...
OR 12	System test is running	
OR 13	Device is offline	Last seen 1 m ago
OR 14	Device is in operation	1 m, Started: 14:28 PM
OR 15	System test is running	
OR 16	Data outdated, please test device.	

Recently used devices without a room

- Perseus A500 LPVX-0001: Please assign a room to this device.
- Perseus A500 LPVX-0002: Please assign a room to this device.
- Perseus A500 LPVX-0003: Please assign a room to this device.
- Perseus A500 LPVX-0004: Please assign a room to this device.
- Perseus A500 LPVX-0005: Please assign a room to this device.

D-19911-2025

Streamline your daily device check process with the OR Companion. Check in the dashboard whether all self-tests have been completed successfully. Directly identify requiring your attention due to failed self-tests and initiate remedial actions.

Perseus A500
Data received: today, 14:28

System test failed

System test result: --
Last tested: --
Expires in: --

Leakage test result:

Last tested: --
Test result: --

Cause
The APL valve or the breathing bag have leakage. Man/Spon mode might not be available.

Remedy
Set the APL valve to 30.
Check the breathing bag for leakage.
Replace the breathing system.

Supply data

Central O ₂ supply pressure:	2.7 bar
Central Air supply pressure:	6.3 bar
Central N ₂ O supply pressure:	2.8 bar
Cylinder O ₂ supply pressure:	1.0 bar
Cylinder Air supply pressure:	2.4 bar
Cylinder N ₂ O supply pressure:	9.1 bar
Battery status:	84%
Desflurane:	--
Isoflurane:	--
Sevoflurane:	Not empty

Basic data

Machine type:	Perseus A500
Serial number:	DEMO-1014
Device name:	Perseus A500
Software version:	2.05
Device language:	-
Installed device software options:	APRV Auto On FiO ₂ prediction Inspiration hold / Expiration hold Pressure Support System integration Trended Economizer

Accessories
Data received: yesterday, 16:00

Name	Installed on	In use	Remaining	Cases
Water trap	--	--	--	--
CO ₂ absorber	Sat, 15 Nov 2025, 13:00	23 d	5 d	4
Insp. flow sensor	Fri, 17 Oct 2025, 08:00	52 d	38 d	5
Exp. flow sensor	Fri, 31 Nov 2025, 10:00	17 d	73 d	4
Breathing circuit	Sat, 22 Nov 2025, 07:00	16 d	-15 d	4

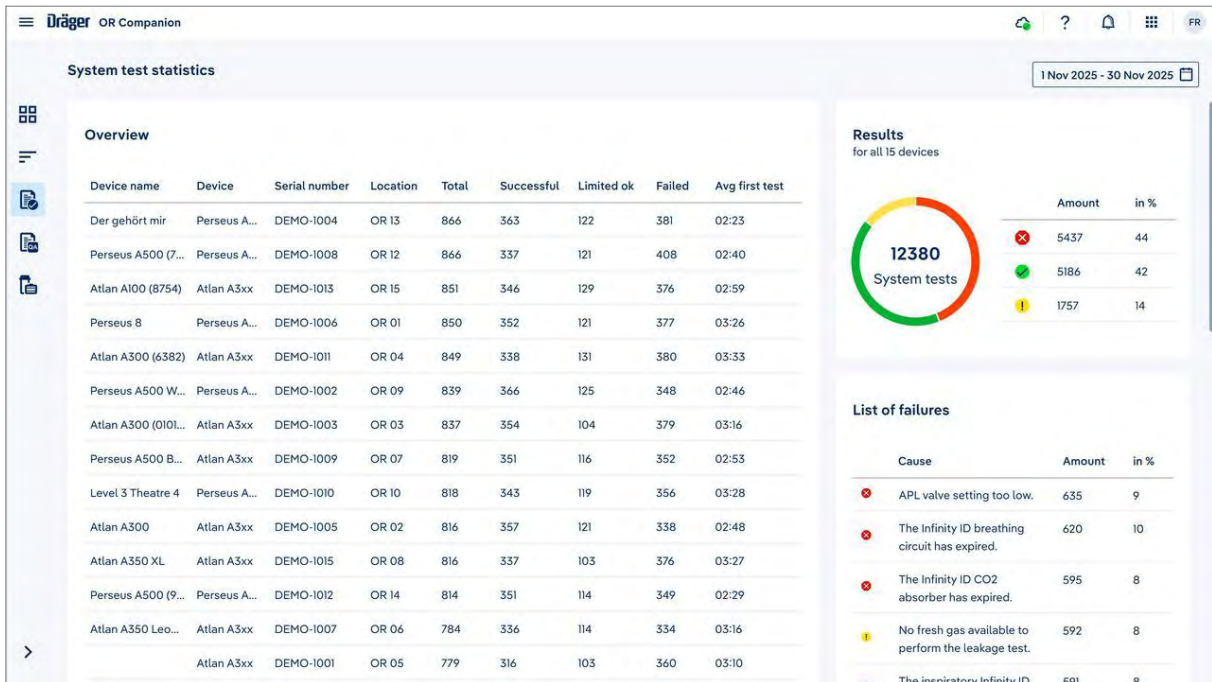
D-19912-2025

The Self-Test Tracker option provides information on remedy actions for errors during the system test procedure along with further device-specific status data.



D-19913-2025

View the Progress Tracker for a full overview on self-test events and anaesthesia runtimes for all operating rooms.



D-19914-2025

Discover self-test statistics to analyse the self-test history. Identify most common error types and devices with the most failed self-tests.

System Components

D-7118-2011



Dräger Perseus A500

Outstanding ventilator technology meets the latest approaches to ergonomics and system integration in one innovative anaesthesia machine, developed together with experts from all over the world to streamline your anaesthesia workflow.

D-2308-2022



Dräger Atlan A350/A350 XL

The new platform offers flexibility for most spatial conditions. The high precision piston ventilator supports lung protective ventilation measures and a comprehensive set of parameters assist decision-making support. The Atlan A350/XL can be networked to communicate securely with other networked devices to share data and information that can help to increase efficiency and reduce errors in anaesthesia.

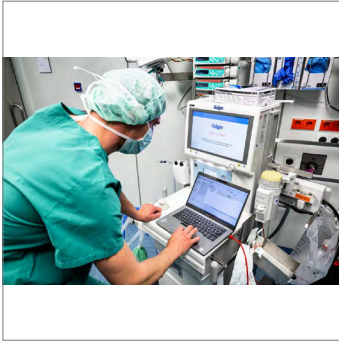
D-12653-2018



Dräger Atlan A300/A300 XL

The new platform offers flexibility for most spatial conditions. The high precision piston ventilator supports lung protective ventilation measures and a comprehensive set of parameters assist decision-making support. The Atlan A300/XL can be networked to communicate securely with other networked devices to share data and information that can help to increase efficiency and reduce errors in anaesthesia.

Services



D-5749-2023



D-9836-2024

Connectivity Package

The Connectivity Package turns your medical device data into meaningful insight to increase workflow efficiency, facilitate cybersecurity and build the foundation for the hospital of tomorrow. Our package offers you even more: It enables the connected maintenance of your fleet and is your gateway to digital applications and services. The Connectivity Package bundles the tools required to establish the connectivity of your Dräger devices for Hospital Data Analytics and further Digital Solutions.

Dräger Services

We support you with a complete solution approach: Our medical devices, services, accessories and digital solutions work in sync to improve acute care.

Medical equipment performs at its best when it is correctly and regularly maintained. With our Dräger manufacturer service and original spare parts you can rely on product longevity and efficiency. Find out more about the high quality of service that only we as a manufacturer can offer.

Related Products



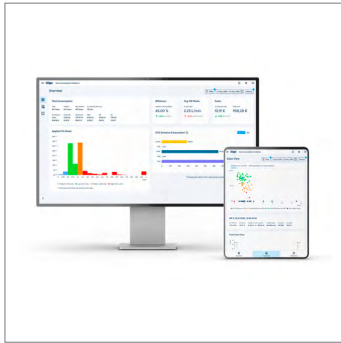
D-8455-2023

Dräger Lung Protective Ventilation Analytics – Anaesthesia

Identify actions to improve patient ventilation therapy with Lung Protective Ventilation Analytics - Anaesthesia. The automatically generated dashboard provides insight into the quality of ventilation by analysing parameters, modes, and recruitment manoeuvres. Enable a consistent implementation of lung protective ventilation practices and benchmark ventilation performance against pre-defined goals to achieve a high standard of ventilation therapy.

Related Products

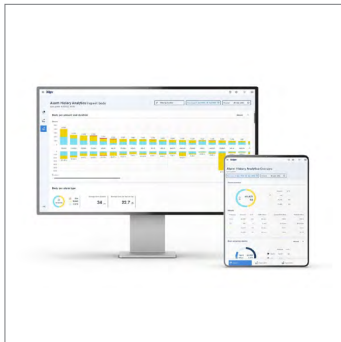
D-7349-2024



Dräger Gas Consumption Analytics

Discover insights into your anaesthetic gas consumption with Gas Consumption Analytics. The application helps you to monitor the implementation of lung-protective ventilation strategies and derive financial insights from the agent consumption of connected anaesthesia devices by Dräger. Utilise the application to create transparency on consumption uptake, efficiency, cost and applied fresh gas flows.

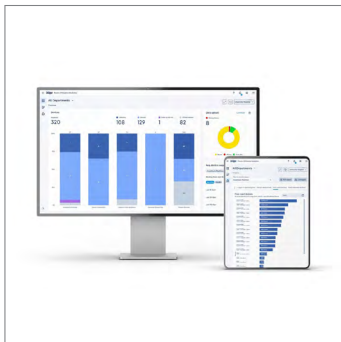
D-6388-2023



Dräger Alarm History Analytics

Gain continuous insights from your clinical alarms with Alarm History Analytics. This solution supports your alarm management strategy and provides a customised analysis of the alarms occurring from your Infinity patient monitors. Identify the causes of high alarm quantities in your units and monitor the results of countermeasures over time in the dashboard.

D-11810-2024



Dräger Device Utilization Analytics

Improve the security, performance, and uptime of your networked medical device fleet with Device Utilization Analytics. The solution consolidates relevant information about the utilisation of your networked devices. This enables you to easily monitor device status in near real-time, review historical utilisation information and check the current software status of your Dräger medical devices.

D-10231-2025



Dräger Mobile Patient Watch

Your access to patient information anytime, anywhere. With Mobile Patient Watch, you receive location-independent access to clinical patient information on mobile devices, tablets or desktop PCs. Customise the application to your care area's needs and perform supervision and remote consultancy based on the near real-time data from Infinity Dräger patient monitors, ventilators and anaesthesia devices.

Related Products

D-10297-2025



Dräger Mobile Patient Watch Pro

Your access to remotely check patient status anytime, anywhere. Mobile Patient Watch Pro supports you in making the right clinical decisions by displaying clinical patient information and active alarm sources on your mobile devices, tablets or desktop PCs. Avoid unnecessary walking distances with remote status assessment, supervision and consultation based on high-quality, near real-time data from Dräger patient monitors, ventilators or anaesthesia devices.

Technical Data

PC device requirements for web-based solution

Desktop/Laptop hardware	Full HD screen (1920 x 1080 pixels) recommended for best visual performance
Desktop/Laptop operating systems	Windows 11
Mobile access	Yes
Recommended web browser	Microsoft Edge, Mozilla Firefox, Google Chrome (for Windows-based systems)
Internet connection	Internet access via web browser shall support secure connections (https) and allow cookies

System requirements

Compatible devices	Perseus A500, Atlan A300, Atlan A300 XL, Atlan A350, Atlan A350 XL, Atlan A100
Perseus A500 software version	Version 2.0 or higher for Self-Test Tracker option
Atlan family software version	Version 1.0 or higher. Version 2.0 or higher for Auto-On functionality. Auto-on is a paid add-on option to Atlan

Connectivity Package server platform requirements*

ServiceConnect Gateway software version	Version 2.60.3
System host	Workstation or equivalent Virtual Machine (VM)
Operating system	Windows 64bit (Windows 10 x64, Windows 11, Windows Server 2016 R2 x64 or higher recommended)
Browser (for SCG configuration interface)	Microsoft Edge, Mozilla Firefox, Google Chrome
CPU	Up-to-date multi-core CPU with 2GHz or higher
Storage	25 GB minimum free hard drive space for SCG application
Memory	8 GB RAM minimum
Video	1280 x 1024 or higher, 32bit or more colours
Network	Two ethernet adapters (for connection to Medical Device Network and Internet / hospital network)
UPS	Uninterruptible Power Supply is optional; recommended to ensure continuous operation during brief losses of power and to protect the system from power line disturbances

* UPS and memory requirements may vary depending on the amount of connected and monitored devices

Additional customer infrastructure requirements

Internet connection	Internet connection is required to establish a secured and encrypted connection for data transfer and gateway communication
---------------------	---

Microsoft, Windows, Windows Server and Edge are registered trademarks of Microsoft Corporation.

Chrome is a registered trademark of Google.

Firefox is a registered trademark of Mozilla Foundation.

The Dräger name, Dräger logo, Infinity, Perseus, Atlan and ServiceConnect are registered trademarks of Dräger.

Not all products, features, or services are for sale in all countries. Trademarks mentioned herein are the property of its respective owner. Trademarks may be owned by Drägerwerk AG & Co. KGaA (Dräger) or its affiliates in certain countries and not necessarily in the country in which this material is released. Visit www.draeger.com/trademarks for the current status of Dräger's trademarks.

Corporate Headquarters

Drägerwerk AG & Co. KGaA
Moislinger Allee 53–55
23558 Lübeck, Germany
■ www.draeger.com

Manufacturer

Drägerwerk AG & Co. KGaA
Moislinger Allee 53-55
23542 Lübeck
✉ info@draeger.com

Region Europe

Drägerwerk AG & Co. KGaA
Moislinger Allee 53–55
23558 Lübeck, Germany
☎ +49 451 882 0
✉ +49 451 882 2080
✉ info@draeger.com

Region Middle East, Africa

Drägerwerk AG & Co. KGaA
Branch Office
Dubai, United Arab Emirates
☎ +971 4 4294 600
✉ +971 4 4294 699
✉ contactuae@draeger.com

Region Asia Pacific

Draeger Singapore Pte. Ltd.
61 Science Park Road
The Galen #04-01
Singapore 117525
☎ +65 6872 9288
✉ +65 6259 0398

Region Central and South America

Dräger Indústria e Comércio Ltda.
Al. Pucuruí, 51/61 – Tamboré
06460-100 - Barueri - São Paulo
☎ +55 (11) 4689-4900
✉ relacionamento@draeger.com



Locate your Regional Sales Representative at:
www.draeger.com/contact