



Dräger Polaris® 600

Brilliant from every angle

Dräger

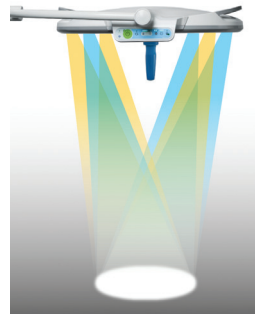
Technology for Life

Brilliant from every angle



Illumination is a critical factor during surgical procedures. The Dräger Polaris® 600 surgical light combines advanced technologies to support precision and efficiency. Intuitive controls adapt the light to each procedure and individual surgeon's need, so you can focus on what matters most – your patient.

Unsurpassed surgical lighting performance



With the special optical system, the homogeneous light field can be adjusted incrementally to quickly provide the right focus and optimal illumination at the surgical site, helping to eliminate shadows and providing maximum performance.

The Polaris 600 is extensively tested with our unique computerized testing methods. The LED lighting, specially designed for the Polaris 600, ensures 70,000 hours of uninterrupted, high-quality performance.

Intuitive light touch control panel



Control panel on the light head allows for complete lighting control for the entire OR team.

OR integration



Polaris 600 is equipped with an integrated OR interface, which allows you to control multiple devices via a central system.

Polaris 600 wall control



Adjusts all aspects of the color coded Polaris lights as well as the HD Camera.

Easy control puts every procedure in the right light



Unique handle with Sterile Touch Control (STC) allows the surgeon to adjust the light intensity and field diameter easily and independently from non-sterile personnel right at the fingertips.

Industry leading wireless technology



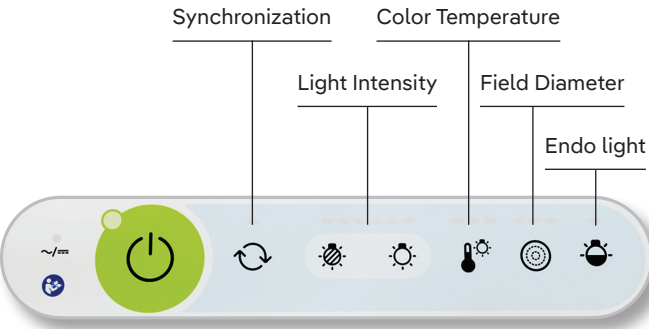
Optional HD camera with wireless video transfer, automatically adjusts to the current light conditions and provides an unrestricted view of the surgical area.



Brilliant technology

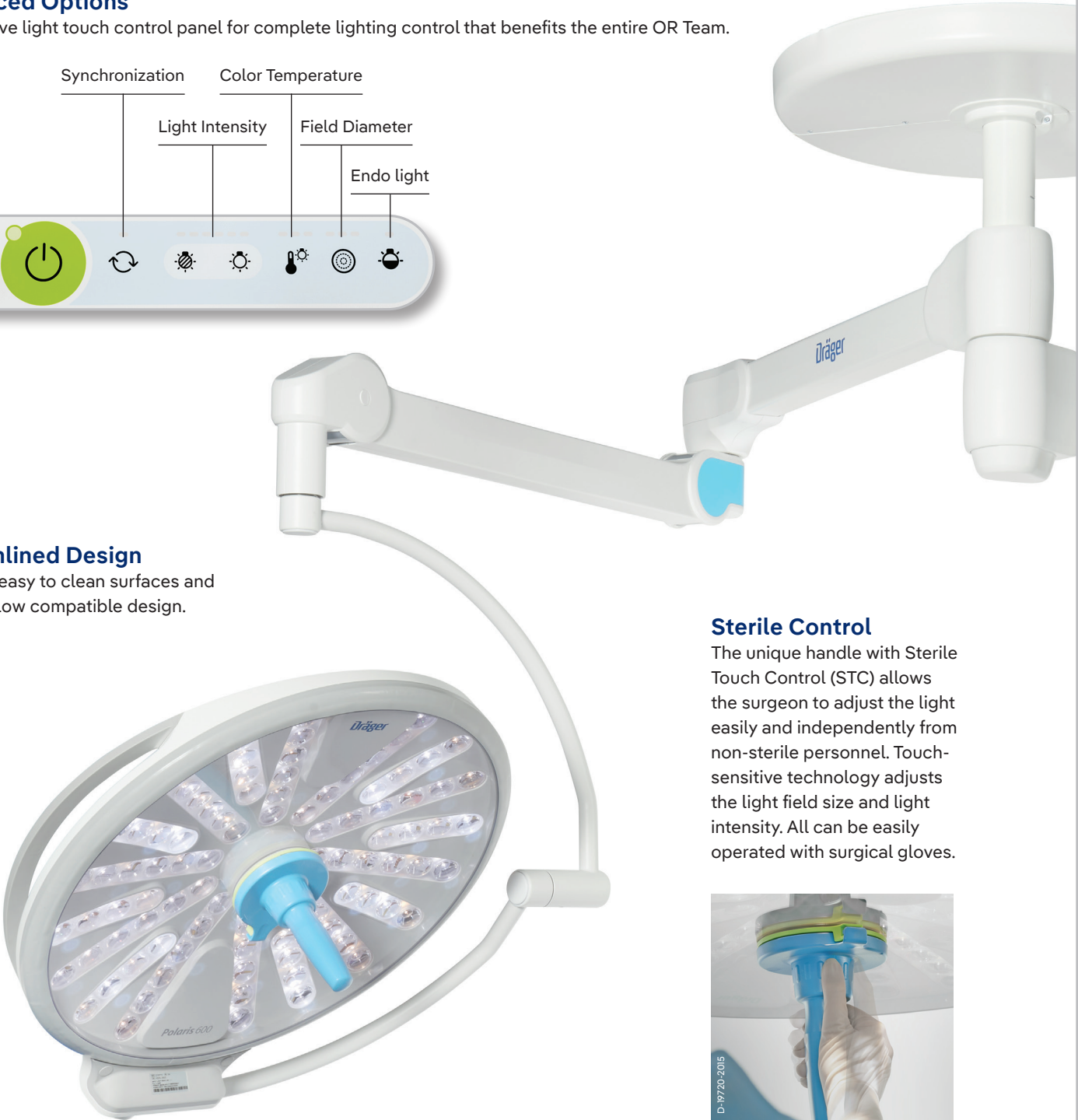
Enhanced Options

An intuitive light touch control panel for complete lighting control that benefits the entire OR Team.



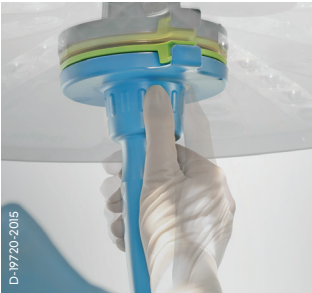
Streamlined Design

Flat and easy to clean surfaces and laminar flow compatible design.



Sterile Control

The unique handle with Sterile Touch Control (STC) allows the surgeon to adjust the light easily and independently from non-sterile personnel. Touch-sensitive technology adjusts the light field size and light intensity. All can be easily operated with surgical gloves.



D-19720-2015

Brilliant performance

Adjustable Color Temperature

From warm white to cold white (3800, 4400, 5000 and 5600 Kelvin) you can switch between four modes to reduce fatigue or glare during longer procedures and increase individual perception for each surgical situation.



3800 K



4400 K



5000 K



5600 K

Ease of Movement

Movement of the Polaris 600 is simple and fluid. It easily moves to where it's needed allowing you to focus on what's important.



Wireless HD Camera

The optional HD camera with wireless video transfer can be added at any time. It automatically adjusts to the current light conditions.



Disposable Sterile Handle

The sterile disposable handle is easy to mount and remove and allows for full functionality of the handle with **Sterile Touch Control**.

Safety through mechanical catch mechanism with audible **“click-function”**, preventing from slipping off the handle during usage

Stability from top part to lower part due to disc and bag

Flap helps as an active **removing mechanism** after surgery

Supports **Sterile Touch Control (STC)** of Polaris 600

Ergonomically shaped inner handle for **easy handling**

Available for Polaris 100/200, Polaris 600, and Polaris Multimedia

Flexible to meet your needs

The Polaris 600 is available in several different configurations depending on your surgical needs and requirements.



A family of products

More than a single product, Dräger also offers a full range of Polaris lighting.



Polaris 100/200



Polaris 50



Variolux

TECHNICAL DATA

Dräger Polaris 600

Light intensity	20.000 Lux to 160.000 Lux / 12 steps
Endo light	3.000 Lux
Light field diameter	190mm, 230mm, 270mm (7.5 in, 9 in, 11 in)
Color temperature adjustment	3800K, 4400K, 5000K, 5600K
Light head diameter	620 mm (24 in)
Light head weight	15.5 kg (34 lbs.)
Color rendering index Ra	
(at 3800 K / 4400 K / 5000 K / 5600 K)	96 / 95 / 95 / 95
Life time of LEDs	70,000 hours
Full HD camera / wireless transmission	120 x zoom (1920 x 1080 pixels, 10x optical, 12x digital)
Laminar flow compatible	Yes
Light field diameter at a distance of 1 m	
d10	190 mm (7.5 in)
d50	120 mm (4.7 in)
Depth of illumination L1 + L2 (20%)	1300 mm (51 in)
Depth of illumination L1 + L2 (60%)	700 mm (27.5 in)
Maximum Central illuminance	160,000 lx
Ee/Ec ratio	3.8 W/m ² x lx
Number of LEDs	92 pcs.
Number of LED modules	18 pcs.
Cardanic support options	Standard or short (ideal for lower OR ceiling heights)

Not all products, features, or services are for sale in all countries. Mentioned Trademarks are only registered in certain countries and not necessarily in the country in which this material is released. Go to www.draeger.com/trademarks to find the current status.

Corporate Headquarters

Drägerwerk AG & Co. KGaA
Moislinger Allee 53-55
23558 Lübeck, Germany

www.draeger.com

Manufacturer:

Dräger Medical Systems, Inc.
3135 Quarry Road
Telford, PA 18969, USA

USA

Dräger, Inc.
3135 Quarry Road
Telford, PA 18969, USA
☎ +1 800 4DRAGER
(+1 800 437 2437)
☎ +1 215 723 5935
✉ info.usa@draeger.com

Canada

Dräger Medical Canada Inc.
2425 Skymark Avenue, Unit 1
Mississauga, Ontario, L4W 4Y6
☎ +1 905 212-6600
Toll-free +1 866 343 2273
☎ +1 905 212-6601
✉ Canada.support@draeger.com



Locate your Regional Sales
Representative at:
www.draeger.com/contact