

Dräger X-plore®

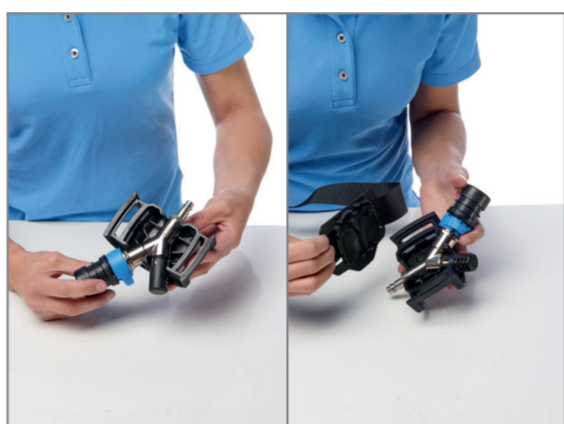
Donning / Doffing procedure

with Dräger PAS X-plore® and
Dräger X-plore® 9300 Airline System

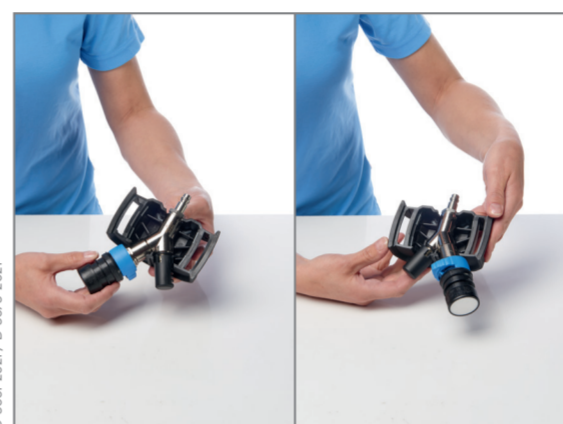
1. Donning the belt unit



Carry out a visual inspection



Assemble the components: Y-part, housing, belt, comfort belt if necessary



The manifold can be worn on the left or right side. To swap sides, loosen the belt, remove the backplate if fitted and rotate the manifold



Put on the belt and adjust as necessary. Ensure that the manifold is fitted tightly against the body.



Connect the airline supply to the input coupling. The whistle will sound briefly as the pressure increases



Put on the headgear - see separate instructions for use. Take several deep breaths to ensure that sufficient air is available.



Set the control knob to the minimum flow position at the start of the task. Use the knob to adjust the air flow as necessary to suit your work intensity (only x-plore 9300)

2. Doffing the belt unit



Remove the headgear, disconnect the airline supply from the input coupling and disconnect the headgear hose from the output coupling and the headgear inlet.



Open the waist belt buckle and remove the equipment.

Carry out the after use maintenance tasks in the maintenance table.

The instructions for use must be read carefully and understood before using the Dräger X-plore® 9300 or PAS X-plore® compressed airline systems with the corresponding headgear.