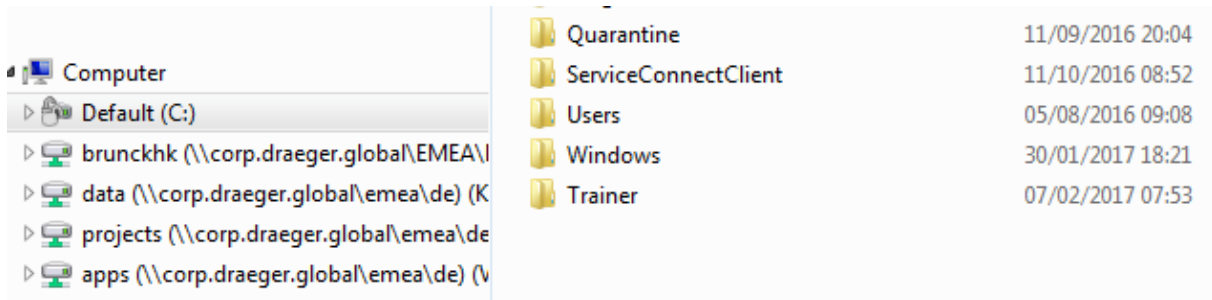


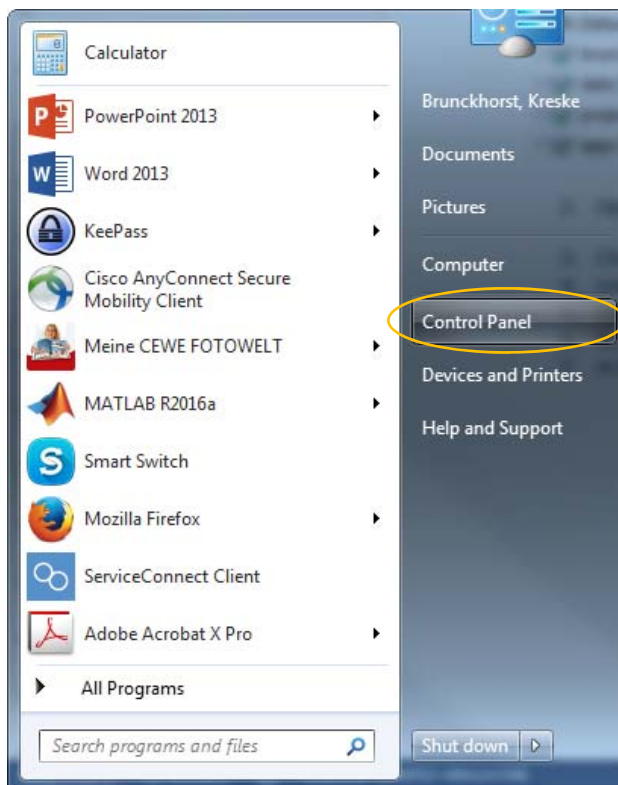
There was an update of the software of the flash-plug-ins. Therefore, the offline-Trainers are not properly working.

The following instructions are given to remedy the problem:

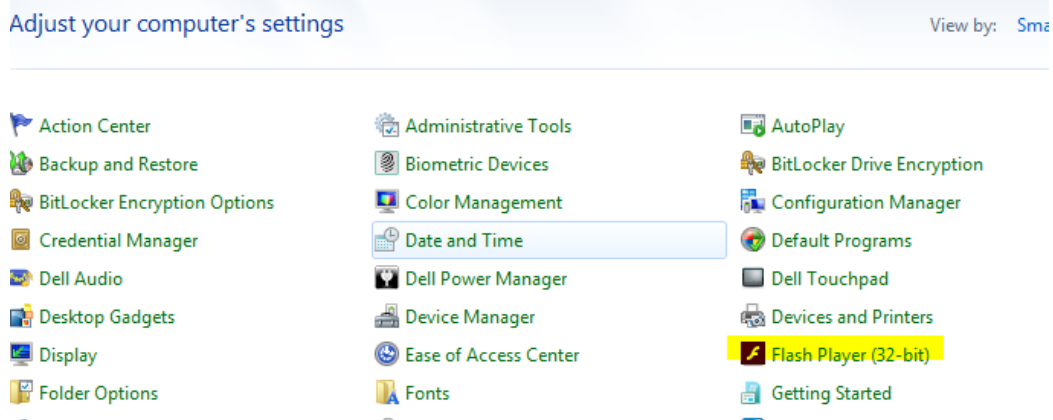
1. Create a **new folder** (e.g. C:/Trainer) and save all trainers that you use there.



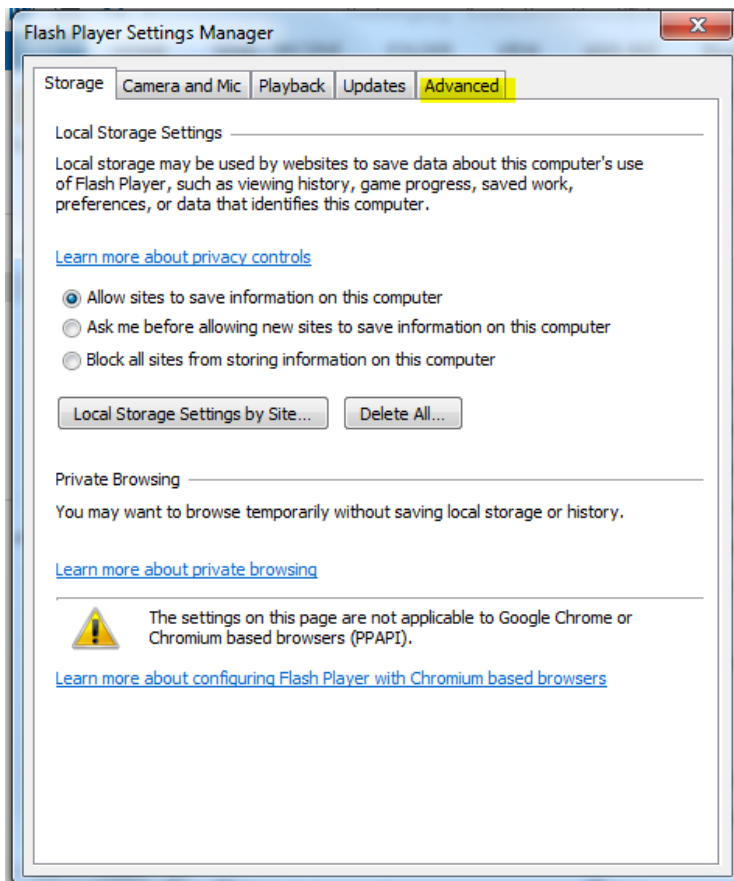
2. Open the windows **control panel**



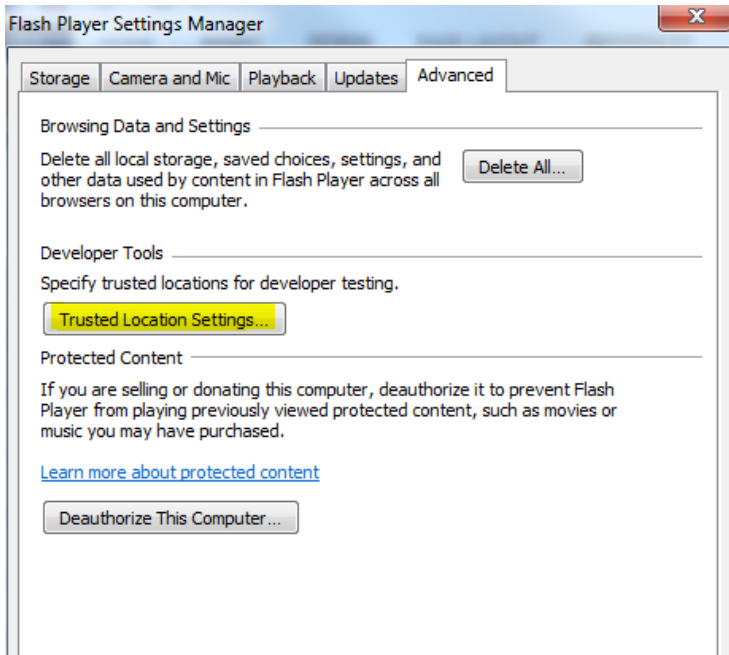
3. Choose **Flash-Player (32-bit)**



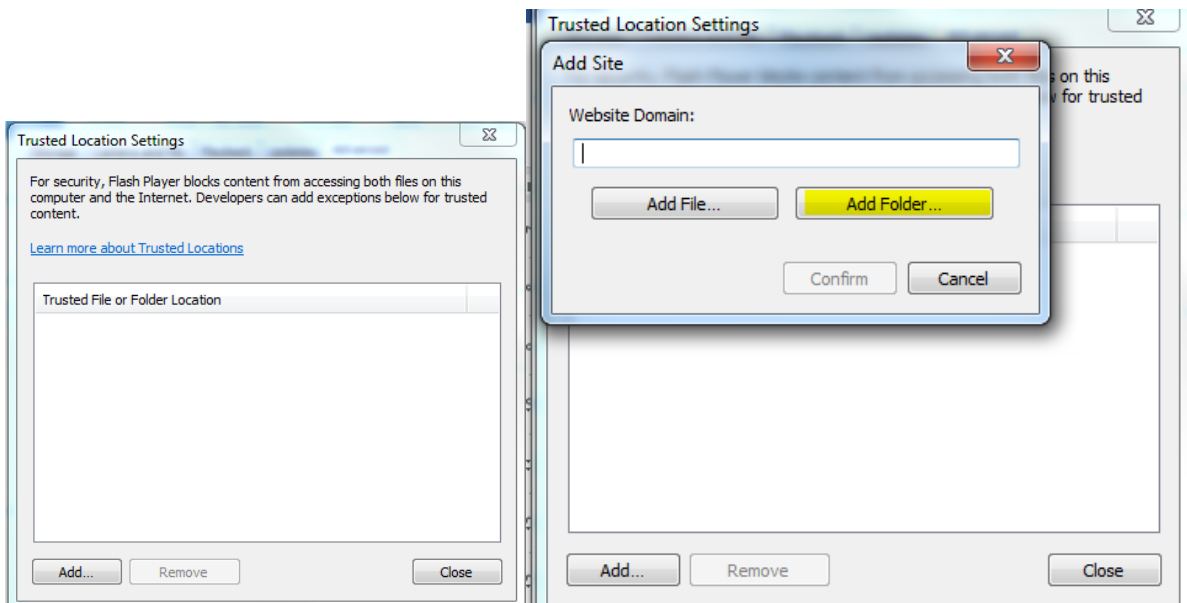
4. Under the tab **advanced....**



5. Open the tab “Trusted Location Settings”



6. By clicking on “Add” and “Add folder” you can select the prior created folder



7. In the end confirm everything and close the window

