

# Accessories

## Dräger PIR 7200



### Splash Guard

68 11 912

To protect the optical system from water and dust, plus in support of fast response by chimney-effect.  
In conjunction with Status Indicator, Flowcell or Bump Test Adapter only.



### Calibration Adapter

68 11 610

For supplying test gas on gas transmitters with Splash Guard, suitable for maximum wind speeds of 30 m/s (11 Beaufort).  
Cannot be used on gas transmitters with Process Adapter or Process Cuvette.



### Insect Guard

68 11 609

To hinder insects from entering the inner volume of the Splash Guard.  
In conjunction with Splash Guard only.



### Magnetic Wand

45 44 101

Tool for calibration / adjustment of the gas transmitter.



### Hydrophobic Filter

68 11 890

A water-repellent filter to protect the optical system from drops of liquid, dust and aerosols.  
In conjunction with Status Indicator, Flowcell or Bump Test Adapter only.



### Process Adapter

68 11 915

To operate the gas transmitter in sampling mode using an external pump, housing made of Polyamide (PA 12).



### Status Indicator

68 11 920

To show the light from the green and yellow status lights at the sides of the Status Indicator.



### Process Cuvette

68 11 415

To operate the gas transmitter in sampling mode using an external pump, housing made of stainless steel (SS 303).



### Dräger RAB 7000

68 12 830

"Remote Access Box", for remote calibration of the Dräger PIR 7200, for fixed use.  
The gas transmitter parameters that may need to be changed for a calibration can be configured, via push-buttons and display.



### Process Cuvette SGR

68 13 219

To operate the gas transmitter in sampling mode using an external pump, housing made of stainless steel (SS 303).  
"Sapphire Glass Removable", for easy cleaning or exchange.



### Flowcell

68 11 910 / 68 11 945

For functional testing or calibration / adjustment of the gas transmitter.

To show the light from the green and yellow status lights at the sides of the Flowcell.

Separate model for duct mount installations available.



### Mounting Set

68 11 648

For mounting the transmitter on flat and curved surfaces, made of stainless steel (SS 316Ti).



### Bump Test Adapter

68 11 930 / 68 11 990

For qualitative functional testing of the gas transmitter under calm air conditions.

To show the light from the green and yellow status lights at the sides of the Bump Test Adapter.

Separate model for duct mount installations available.



### Duct Mount Set

68 11 850

For monitoring the gas concentration in the duct.

For ducts with a minimum diameter of Ø200 mm (Ø7.9 inch) or pipelines with a square cross-section of at least 170 x 170 mm<sup>2</sup> (6.7 x 6.7 inch<sup>2</sup>).



### Ex e Junction Box

68 11 898

For establishing the electrical connection of the Dräger PIR 7200 with M25 thread, suitable for areas in which the type of protection "Increased Safety" is required.



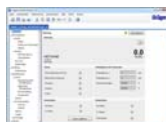
## Accessories

### Dräger PIR 7200



**PolySoft License (1 year support)** 83 28 600  
**PolySoft License (yearly fee)** 83 28 601

For using the software a license code is required. One version activates the software without any time limit but only one year of free of charge updates and the other version activates the software as well without any time limit but unlimited updates as long as the yearly fee is paid. This keeps the PolySoft up to date for all existing transmitters and expansions for new products.



**USB PC Adapter** 68 11 663

For communication of the gas transmitter with a PC and the PC software Dräger CC-Vision GDS.

The maximum distance between the USB PC Adapter and Dräger PIR 7000 is 30 m.

