

Instructions for use

Infinity[®] Gateway Suite

WARNING

For a full understanding of the performance characteristics of this software, the user should carefully read this manual before use.

ADT Configuration Guide Software VF9.n

General information

Repairs/modifications

Modifications of this software should be performed by Dräger-authorized service personnel or organizations, or properly trained technicians. Information about repairs can be obtained from Dräger or authorized service organizations.

Trademarks

The Dräger name and logo are registered trademarks of Dräger.

Infinity® is a registered trademark of Dräger.

Safety

Follow instructions for use

WARNING

Strictly follow these instructions for use. Any use of the software requires a full understanding and strict observation of all portions of these instructions. The software is only to be used for the purpose specified under Intended Medical Application on page four and in conjunction with appropriate patient monitoring. Observe all **WARNING** and **CAUTION** statements as rendered throughout this manual, and all statements on device labels.

Definitions

Certain paragraphs within these instructions are highlighted as **WARNING**, **CAUTION** or **NOTE** as follows:

WARNING

A **WARNING** statement provides important information about a potentially hazardous situation that, if not avoided, could result in death or serious injury.

CAUTION

A **CAUTION** statement provides important information about a potentially hazardous situation that, if not avoided, may result in minor or moderate injury to the user or patient or in damage to the equipment or other property.

NOTE

A **NOTE** provides additional information intended to avoid inconvenience during operation.

Connections to IT networks

Many medical devices manufactured by Dräger use networks to transmit patient data. Hospitals should refer to IEC 80001-1 before attempting to connect such medical devices to their IT networks.

Intended use

The Infinity Gateway software applications are intended to provide clinicians with the capability of viewing patient data remotely via the Infinity network and for data exchange of select clinical and administrative information between the Infinity network and the hospital network.

This page has been left blank intentionally.

Contents

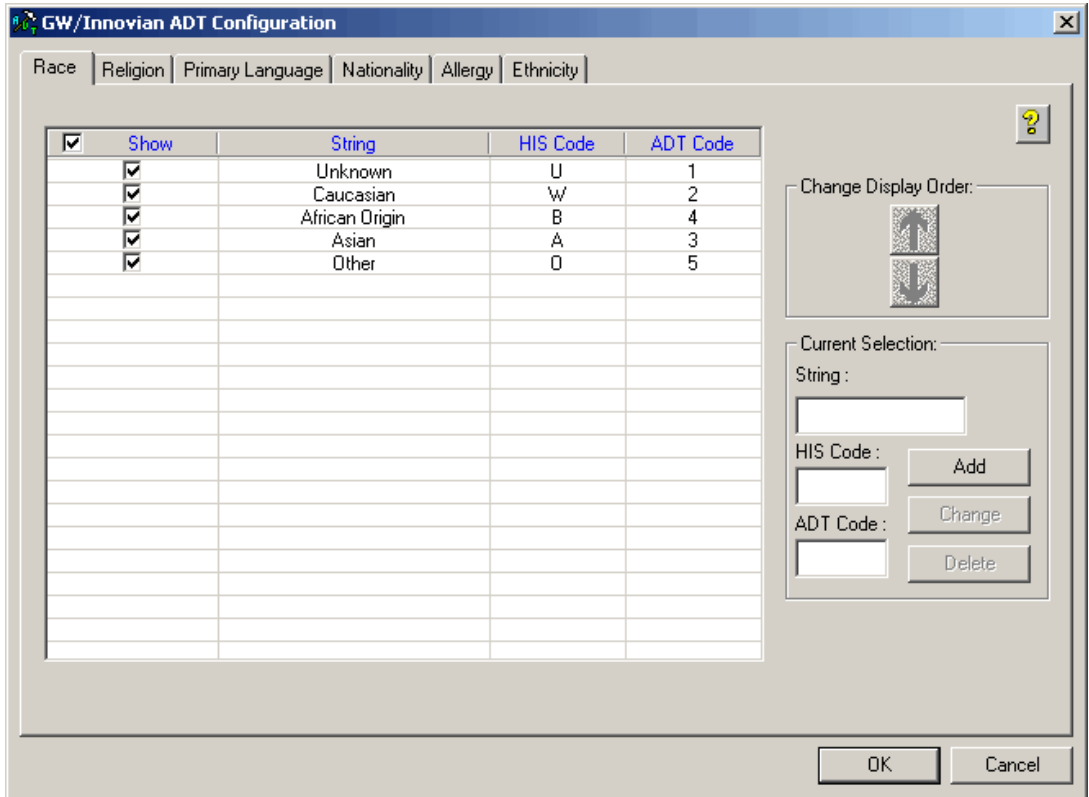
General information	3
Repairs/modifications	3
Trademarks	3
Safety	4
Follow instructions for use	4
Definitions	4
Connections to IT networks	4
Intended use	5
ADT configuration	9

This page has been left blank intentionally.

ADT configuration

ADT Configuration can be used to configure how the **Race**, **Religion**, **Primary Language**, **Nationality**, **Allergy**, and **Ethnicity** data fields are imported.

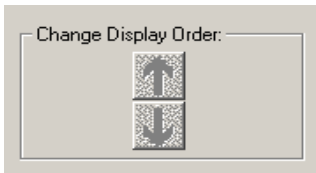
Although a default configuration is provided, Dräger recommends configuring this database prior to using the ADT feature.



Feature	Description	Maximum Character Length
Show	Controls whether an entry is displayed or hidden in Gateway.	N/A
String	Used to customize data lists for race, religion, etc.	16 (40 for allergy)
HIS Code	Used in the hospital information system to denote the particular race, religion, primary language, nationality, allergy, or ethnicity.	4
ADT Code	An internal code used between the HL7 server and Innovian. NOTE: Some ADT codes cannot be changed.	N/A
Change Display Order	Use to customize the order in which the selection is displayed in Innovian.	N/A

Change the display order

- 1 Select the entry you want to move.
- 2 Use the arrows to change the order in which the entry is displayed.



Change strings, HIS codes, and ADT codes

- 1 Select the entry to change.
- 2 Enter new text or codes into the **Current Selection** fields.
- 3 Click **Change**.

Current Selection:

String :

HIS Code :

ADT Code :

Add a new demographic entry

- 1 Click on an empty line in the list.
- 2 Enter the desired string, HIS code and ADT code (no duplicates allowed) into the **Current Selection** box.
- 3 Click **Add**.

GW/Innovian ADT Configuration

Race Religion Primary Language Nationality Allergy Ethnicity

<input checked="" type="checkbox"/>	Show	String	HIS Code	ADT Code
<input checked="" type="checkbox"/>	<input checked="" type="checkbox"/>	Unknown	U	1
<input checked="" type="checkbox"/>	<input checked="" type="checkbox"/>	Caucasian	W	2
<input checked="" type="checkbox"/>	<input checked="" type="checkbox"/>	African Origin	B	4
<input checked="" type="checkbox"/>	<input checked="" type="checkbox"/>	Asian	A	3
<input checked="" type="checkbox"/>	<input checked="" type="checkbox"/>	Who Knows	K	5

Change Display Order:

Current Selection:

String :

HIS Code :

ADT Code :

Delete an entry

- 1 Select the entry to delete.
- 2 Click **Delete**.

NOTE

Some entries are hard-coded for the Infinity network. These cannot be deleted.

Show or hide entries

Select or deselect the check box to show or hide an entry respectively.

<input checked="" type="checkbox"/>	Show	String	HIS Code	ADT Code
<input checked="" type="checkbox"/>		Unknown	U	1
<input checked="" type="checkbox"/>		Caucasian	W	2

Select or deselect the check box next to **Show** to show or hide all of the entries; however, at final configuration, at least one entry must be set to **Show**.

<input checked="" type="checkbox"/>	Show
-------------------------------------	------

This page has been left blank intentionally.

This page has been left blank intentionally.

These instructions for use only apply to
**Infinity® Gateway Suite ADT Configuration
Guide VF9.n**

with the Serial No.:

If no Serial No. has been filled in by Dräger,
these instructions for use are provided for
general information only and are not intended for
use with any specific machine or unit.

This document is provided for customer
information only, and will not be updated or
exchanged without customer request.



Directive 93/42/EEC
concerning Medical Devices



Draeger Medical Systems, Inc.

3135 Quarry Road
Telford, PA 18969-1042
U.S.A.

(215) 721-5400
(800) 4DRAGER
(800 437-2437)

FAX (215) 723-5935
<http://www.draeger.com>

Distributed in US by

Draeger, Inc.

3135 Quarry Road
Telford, PA 18969-1042
U.S.A.

(215) 721-5400
(800) 4DRAGER
(800 437-2437)

FAX (215) 723-5935
<http://www.draeger.com>



In Europe, Middle East, Africa, Latin
America, Asia Pacific distributed by

Drägerwerk AG & Co. KGaA

Moislinger Allee 53 – 55
23542 Lübeck
Germany

+49 451 8 82-0
FAX +49 451 8 82-20 80

<http://www.draeger.com>

3703518 – RI 00 en

© Drägerwerk AG & Co. KGaA

Edition: 1 – 2019-03

Dräger reserves the right to make modifications
to the equipment without prior notice.

