

## Option Smart Pulmonary View

Evita Infinity® V500\*, Babylog® VN500\*\* and Evita V300:  
The Smart Pulmonary View performs realtime visualization of pulmonary function data. By turning data into useful visual information, the Smart Pulmonary View helps reduce the cognitive work load of ICU staff.



D-52572-2012

- Visual representation of data in real time
- Intuitive anatomical analogy
- Reduction of cognitive load

The Smart Pulmonary View performs real-time visualization of pulmonary function data. By turning data into useful visual information, the Smart Pulmonary View helps reduce the cognitive workload of ICU staff.

### THE DATA RACE

Modern ICU or NICU environments constantly generate large amounts of raw data. Before clinical decisions can be made, those data have to be interpreted. Taken together with all of the tasks involved in running an ICU or NICU, physicians, nurses, and respiratory therapists alike have a huge cognitive load to manage. So, why not use technology to turn those data into information that can be understood at a glance.

### MAKING SENSE OF THE NUMBERS

In ventilated patients on an ICU or NICU, the analysis of pulmonary mechanics plays a vital role. Until now, parameters such as Compliance (C) and Resistance (R) were

displayed as numeric data or in the form of a trend graph. The interpretation of the numbers was left entirely to the clinician.

### THE VISUAL SOLUTION

Human beings are visually oriented. A picture truly is worth more than a thousand words. Smart Pulmonary View incorporates pulmonary function data into a visual representation of the respiratory system's key elements. Working together with leading clinicians, Dräger found a way to open a new window on the patient's respiratory status. The data have now become information which can be easily recognized and put to use almost instantly.

### HOW SMART PULMONARY VIEW WORKS

The Smart Pulmonary View depicts changes in Compliance by constantly changing the width of the pulmonary outline; the lower the Compliance, the thicker the outline and vice versa. Correspondingly, changes in Resistance are shown by changing the width of the airways. Inspiratory efforts are also indicated by a moving depiction of a diaphragm.



D-34068-2011

Evita Infinity V500



D-25930-2009

Babylog VN500



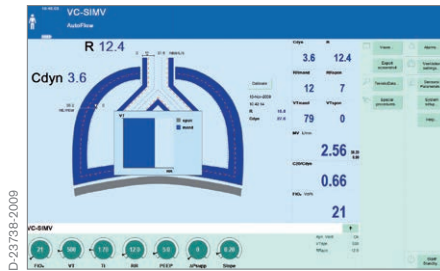
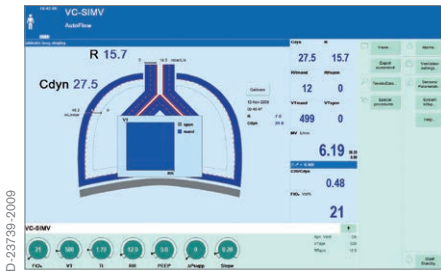
D-43497-2012

Evita V300

in countries the product name is:

\*Infinity Acute Care System Workstation Critical Care

\*\* Infinity Acute Care System Workstation Neonatal Care



Changes in Resistance are shown by changing the width of the airways; the higher the Resistance, the thicker the outline and vice versa.

Changes in Compliance are shown by changing the width of the pulmonary outline; the lower the Compliance, the thicker the outline and vice versa.

This anatomical analogy greatly facilitates the interpretation of the patient's respiratory status. In addition to Compliance, Resistance and inspiratory efforts, the Smart Pulmonary View also shows the proportion of mandatory breath to

spontaneous breathing. This provides essential information on the quality and efficacy of spontaneous respiration. Together, the parameters f<sub>spn</sub> and VT<sub>spn</sub> depict spontaneous minute volumes as an area, while the parameters

f<sub>mand</sub> and VT<sub>mand</sub> show corresponding mandatory ventilation. Smart Pulmonary View's comprehensive display supports the evaluation of the patient's respiratory status by significantly reducing the cognitive load on the clinician.

**TECHNICAL DATA**

Measurement ranges

Compliance (C): 0-400 ml/mbar (or mL/cmH<sub>2</sub>O)

Resistance (R): 0-300 mbar/l/sec (or cmH<sub>2</sub>O/L/s)

**ORDER INFORMATION**

Option Smart Pulmonary View (factory installed)

8416400 (for V500), 8417400 (for VN500), 8420400 (for V300)

Option Smart Pulmonary View (retrofit kit)

8416200 (for V500), 8419200 (for VN500), 8420420 (for V300)

**CORPORATE HEADQUARTERS**

Drägerwerk AG & Co. KGaA  
Moislinger Allee 53-55  
23558 Lübeck, Germany

www.draeger.com

**Manufacturer:**

Dräger Medical GmbH  
Moislinger Allee 53-55  
23558 Lübeck, Germany

**As of August 2015:**

Dräger Medical GmbH changes to Drägerwerk AG & Co. KGaA.

**REGION EUROPE CENTRAL AND EUROPE NORTH**

Dräger Medical GmbH  
Moislinger Allee 53-55  
23558 Lübeck, Germany  
Tel +49 451 882 0  
Fax +49 451 882 2080  
info@draeger.com

**REGION EUROPE SOUTH**

Dräger Médical S.A.S.  
Parc de Haute Technologie d'Antony 2  
25, rue Georges Besse  
92182 Antony Cedex, France  
Tel +33 1 46 11 56 00  
Fax +33 1 40 96 97 20  
dlmfr-contact@draeger.com

**REGION MIDDLE EAST, AFRICA**

Dräger Medical GmbH  
Branch Office  
P.O. Box 505108  
Dubai, United Arab Emirates  
Tel +971 4 4294 600  
Fax +971 4 4294 699  
contactuae@draeger.com

**REGION ASIA / PACIFIC**

Dräger Medical  
South East Asia Pte Ltd.  
25 International Business Park  
#04-27/29 German Centre  
Singapore 609916, Singapore  
Tel +65 6572 4388  
Fax +65 6572 4399  
asia.pacific@draeger.com

**REGION CENTRAL AND SOUTH AMERICA**

Dräger Panama Comercial S. de R.L.  
Complejo Business Park,  
V tower, 10th floor  
Panama City  
Tel +507 377 9100  
Fax +507 377 9130  
contactcsa@draeger.com